

SAFE SCHOOLS



Appropriation Report 2000 - 2001 School Year



FLORIDA DEPARTMENT OF EDUCATION

This product was developed by the State of Florida, Department of Education, Division of Public Schools and Community Education, Bureau of Equity, Safety and School Support, Office of Safe Schools.

For additional information on this publication, contact the Office of Safe Schools, Florida Department of Education, Room 301 Turlington Building, Tallahassee, Florida 32399-0400.

Telephone: (850) 410-1667

FAX: (850) 410-1796

Suncom: 210-1667

E-mail: louise.rill@fldoe.org

SAFE SCHOOLS
APPROPRIATION REPORT

2000-2001 SCHOOL YEAR

Florida Department of Education
Division of Public Schools and Community Education
Bureau of Equity, Safety and Support Services
Office of Safe Schools

Copyright
State of Florida
Department of State
2002

Authorization for reproduction is hereby granted to the state system of public education as defined in section 228.041(1), Florida Statutes. No authorization is granted for distribution or reproduction outside the state system of public education without prior approval in writing.

*Safe Schools Appropriation Report
2000-2001 School Year*

TABLE OF CONTENTS

Introduction.....	7
History and Background.....	7
Safe Schools Appropriation Allocations.....	8
After-School Programs	10
Program Specifics.....	10
After-School Program Goals	12
After-School Program Partners.....	13
Alternative Placement Programs for Adjudicated Youth	15
Program Specifics.....	16
Alternative Placement Program Goals.....	16
School Safety and Security Program Activities.....	18
Program Specifics.....	20
Types of School Safety and Security Program Activities	22
School Resource Officers (SROs) and Other School Law Enforcement Officers (LEOs).....	22
Security Equipment	26
Critical Issues for School Safety	27
Summary	29
Appendices.....	30
Appendix A: Safe Schools Appropriation Proviso Language	31
Appendix B: 2000-2001 State Safe Schools Appropriation Survey of Activities Instrument.....	33
Appendix C: Longitudinal Analysis of Safe Schools Appropriation	40
Appendix D: Four-Year District Budget Analysis by Safe Schools Category	42
Appendix E: District Safe Schools Contact Person List.....	44

LIST OF TABLES

Table 1 - Safe Schools Fiscal Summary 8

Table 2 - Total Safe Schools Funds Expended by Program Component..... 8

Table 3 - Analysis of After-School Program Expenditures 10

Table 4 - After-School Program Operation Characteristics..... 11

Table 5 - Goals of After-School Program Activities 12

Table 6 - After-School Program Partners 12

Table 7 - Analysis of Alternative Placement Program Expenditures 13

Table 8 - Alternative Placement Expenditure Categories..... 15

Table 9 - Alternative Placement Program Goals 16

Table 10 - Analysis of School Safety and Security Program Activities 16

Table 11 - Types of School Safety and Security Activities 18

Table 12 - Measuring the Effectiveness of School Safety and Security Program Activities 19

Table 13 - Prevalence of School Safety and Security Activities 22

Table 14 - Presence of SROs/LEOs in Districts 23

Table 15 - Number of Districts Utilizing Safe Schools Funds for SROs/LEOs..... 25

Table 16 - Other Funding Sources for SROs 26

Table 17 - Number and Type of Metal Detector by School Level 26

Table 18 - Number of Surveillance Cameras by School Level..... 27

Table 19 - Types of School Safety and Security Programs Activities Critical Safety Issues..... 27

LIST OF FIGURES

Figure 1 - Trend Analysis of Program Expenditures9
Figure 2 - Top Six District Goals of After-School Programs 13
Figure 3 - Most Prevalent After-School Program Partners 2000-2001..... 14
Figure 4 - Top Four Critical Safety Issues.....28

INTRODUCTION

The Office of Safe Schools, in the Bureau of Equity, Safety and School Support, Florida Department of Education, prepared the 2000-2001 *Safe Schools Appropriation Report*. This report summarizes school district expenditures, budgeting, and activities of the Florida Safe Schools Appropriation for the 2000-2001 school year. This report includes a history of the safe schools effort in Florida and presents the data collected from the 2000-2001 *Safe Schools Appropriation Survey*. The appendices include documents associated with these program activities as well as related reference information. For additional information on Safe Schools Appropriation activities, contact the Office of Safe Schools at (850) 410-1667 or Suncom 210-1667.

History and Background

The *Safe Schools Program* was funded initially for the 1983-1984 school year. In 1986, the Florida Legislature enacted the *Florida Safe Schools Act*, in which funding was based solely on the juvenile crime index and, therefore, went primarily to large urban school districts. This method of allocation continued through the 1992-1993 school year. Then, the *Florida Safe Schools Act* remained unfunded for several years and was rescinded by the 1997 Florida Legislature.

In 1994, the Florida Legislature funded safe schools activities through proviso language in its appropriations bill. This funding has continued to the present (see Appendix A: Safe Schools Appropriation Proviso Language). The purpose of the funding is to provide resources for after-school middle school programs and alternative placements for adjudicated youth, and to enhance the safety and security of the learning environment. This purpose has remained stable. Currently, each district receives a minimum of \$30,000. The remaining balance of the Safe Schools Appropriation is distributed based on the following formula: two-thirds based on the latest crime index and one-third on each district's share of the state's total weighted student enrollment.

Data for this report were collected in April, 2002 through the *2000-2001 State Safe Schools Appropriation Survey of Activities* (see Appendix B). The survey was distributed to each school district. It requested information from the 2000-2001 school year about the actual expenditures of Safe Schools funds. All 67 county school districts and four other schools (Developmental Research Schools, "Lab" schools) that received Safe School funds responded to the survey and provided expenditure information. For the purpose of this report, when referring to school districts, the number includes the four Developmental Research Schools. Therefore, the number of school districts is 71. The county and school breakdown of the 2000-2001 Safe Schools Appropriation allocation is provided in Appendix C.

SAFE SCHOOLS APPROPRIATION ALLOCATIONS

Since 1996-1997, the Safe Schools Appropriation continues to be a major source of funding for school districts to develop, implement, and enforce school safety and security. The Safe Schools Appropriation allows districts to use their allocation in the manner in which the districts determine best fits their needs. The three main categories in which districts may expend the funds are: 1) After-School Programs, 2) Alternative Placement Programs for Adjudicated Youth, and 3) School Safety and Security Activities. From fiscal years 1996-1997 through 1998-1999, the appropriation remained constant at \$50,350,000. However, in fiscal year 1999-2000, the amount of the Safe Schools Appropriation was increased to \$70,350,000 and in 2000-2001 to \$75,350,000. **Table 1** provides a comprehensive summary of the Safe Schools Appropriation funds allocated since 1996-1997.

Table 1 - Safe Schools Fiscal Summary

Program Components	1996-97	1997-98	1998-99	1999-00	2000-01
Safe Schools Appropriation	\$50,350,000	\$50,350,000	\$50,350,000	\$70,350,000	\$75,350,000
Previous Year "Roll-Forward"*	\$12,242,028	\$5,677,008	\$4,000,821	\$4,368,243	\$6,167,468
Expenditures	\$56,888,368	\$52,059,020	\$50,063,436	\$67,846,358	\$75,421,870
Unexpended at *Year End	\$5,684,388	\$4,003,349	\$4,261,439	\$6,764,211	\$5,944,917

Safe School (FEFP) Appropriation (Source: Funding for Florida Schools)

*Appropriations include 67 districts and Developmental Research School appropriations; Expenditures include 67 districts only.

Table 2 provides specific information on the portions of the appropriation that were expended in the three main categories. For five school years, districts have expended the majority of the funds on School Safety and Security Activities, which comprised 62% of the 2000-2001 expenditures. Appendix C provides a district comparison of these percentages.

Table 2 - Total Safe Schools Funds Expended by Program Component

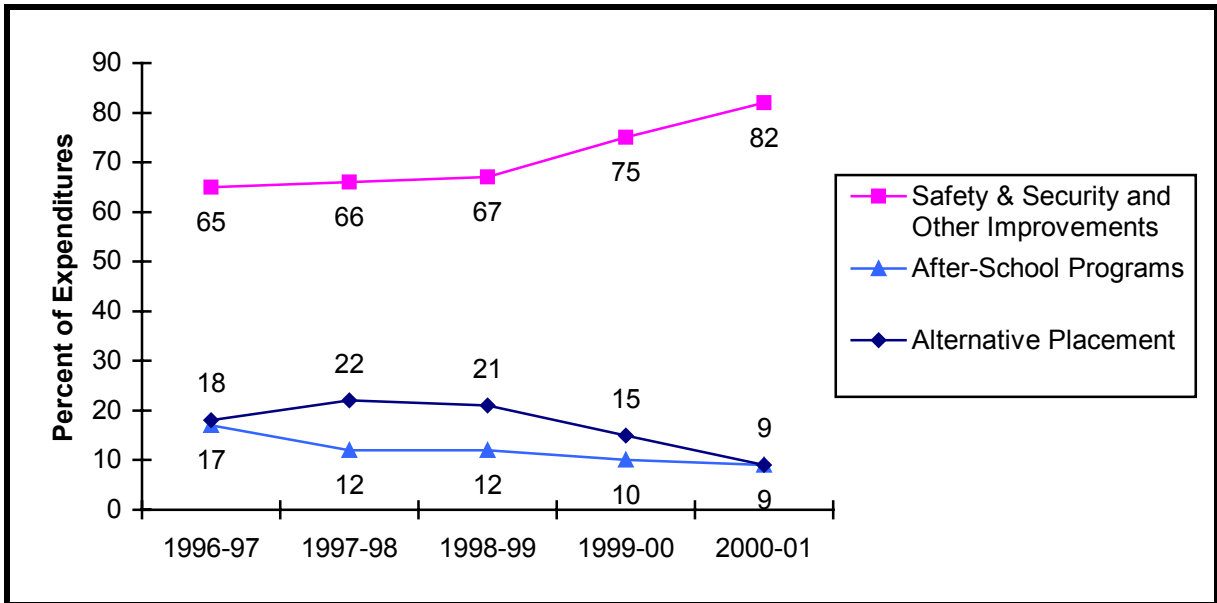
Program Component Totals Expended	1996-97	1997-98	1998-99	1999-00	2000-01
After-School Activities for Middle Schools	17%	12%	12%	10%	9%
Alternative Placement Programs	18%	22%	21%	15%	9%*
Safety/Security Activities	65%	66%	67%	75%	62%
Other Improvements To Make a School Safe**	N/A	N/A	N/A	N/A	20%

*Alternative Placement Program Category for 1996-2000 includes data for all Alternative Placement Programs. The 2000-01 information is for the placement of adjudicated youth only.

**Data are not available for 1996-2000.

Figure 1 graphically displays the trend data on the expenditures in each of the three authorized areas, over the past five years 1996-1997 through 2000-2001. As illustrated, the percent of Safe Schools funds expended on School Safety and Security activities and Other Improvements to make the school safe has steadily increased since 1996-1997, while funds expended on alternative placement have declined since 1998-1999. The percent of funds expended on After-School Programs has also declined since 1998-1999.

**Figure 1 - Trend Analysis of Program Expenditures
1996-1997 to 2000-2001**



AFTER-SCHOOL PROGRAMS

Program Specifics

Since the 1996-1997 school year, districts have typically expended the least amount of Safe Schools funds on After-School Programs. In 2000-2001, eighteen school districts used a portion of their Safe Schools Appropriation for After-School Programs. Nine percent of the total Safe Schools expenditures was spent on After-School Programs. **Table 3** lists each district that used Safe Schools funds for After-School Programs, including the number of programs supported, the percent of Safe Schools funds spent, and amount of funds expended. As the table indicates, Taylor County (52%) was the only district in the State to use more than 50% of its allocation on After-School Programs.

Table 3 - Analysis of After-School Program Expenditures for Elementary and Middle Schools 2000-2001

District	MS No. of After- School Programs	MS % of Safe Schools funds Spent	Amount Spent
Baker	1	23%	\$23,443
Broward	11	10%	\$709,311
Collier	8	6%	\$55,020
Duval	22	29%	1,320,911
Glades	1	6%	\$3,500
Hillsborough	36	28%	\$1,500,000
Lee	18	26%	\$410,712
Leon	9	6%	\$70,564
Manatee	1	4%	\$35,000
Miami-Dade	48	4%	\$600,000
Palm Beach	29	22%	\$1,127,943
Pasco	10	4%	\$49,245
Putnam	3	22%	\$77,318
Sumter	1	24%	\$28,899
Suwannee	2	13%	\$17,248
Taylor	2	52%	\$56,583
Volusia	11	23%	\$440,000
FAU Lab School	1	5%	\$1,700
TOTALS	214	9%	\$6,527,397

Districts also reported the number of middle school and elementary school after-school programs funded by other sources. **Table 4** lists 18 districts reporting 80 middle schools and 457 elementary After-School Programs funded by other sources.

Table 4 - After-School Programs in Middle and Elementary Schools Funded by Other Sources

District	MS No. of After-School Programs	ES No. of After-School Programs
Brevard	14	54
Broward	5	132
Collier	2	41
Duval	3	5
Franklin	2	3
FAU Developmental Research School	1	1
Hillsborough	2	0
Holmes	1	1
Lake	3	20
Lee	0	37
Leon	9	14
Manatee	7	21
Orange	27	92
Sumter	1	5
Suwannee	1	3
Volusia	0	26
FAMU Lab School	1	1
FAU Lab School	1	1
TOTAL	80	457

Table 5 provides information on selected operating characteristics of the After-School Programs funded by the Safe Schools Appropriation. The most remarkable changes were an increase of 63% in snack or meal provision and an increase of 53% in the number of programs that operated on weekends and holidays compared to 1999-2000. The total number of programs operating on weekends and holidays was still less than in 1998-1999. After-School Programs that provide transportation decreased by eight percent (8%) from the previous school year.

Table 5 - After-School Program Operation Characteristics

Program Characteristic	1998-1999	1999-2000	2000-2001	% Change from 1999-2000
Provides Snacks or Meals	*N/A	168	274	+63%
Operates on Weekends and Holidays	41	17	26	+53%
Provides Transportation	110	125	115	-8%

*N/A – Item not asked on the 1998-1999 Safe Schools Appropriation Survey

After-School Program Goals

Districts reported one or multiple goals for their after-school programs. *Table 6* presents the goals of the After-School Programs and the number of districts that indicated the goal for the 2000-2001 school year.

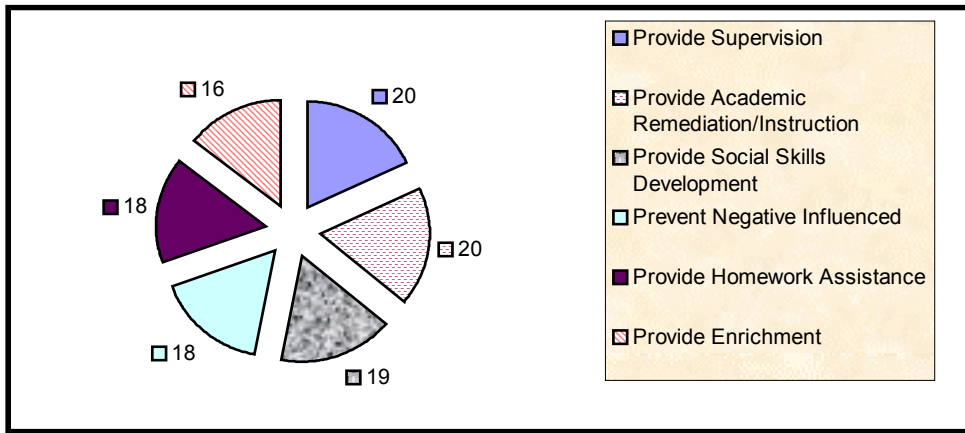
Table 6 - Program Goals 2000-2001

Program Goals	1999-2000 No. of Districts with Goal	2000-20001 No. of Districts with Goal	% Change from 1999-2000 to 2000-2001
Provide Supervision	18	20	11%
Provide Academic Remediation/Instruction	19	20	5%
Provide Social Skills Development	17	19	11%
Provide Homework Assistance	18	18	0%
Prevent Negative Influences	15	18	20%
Provide Enrichment	16	16	0%
Provide Mentoring	13	15	15%
Provide Recreational Activities	18	15	20%
Provide Violence Prevention	11	15	36%
Provide Counseling	7	7	0%

Due to the change in the survey instrument, comparison data from 1998-1999 are not available.

The most frequent goals of After-School Programs are providing: supervision (20 districts), academic remediation/instruction (20 districts), social skills development (19 districts), homework assistance (18 districts), and preventing negative influences (18 districts). *Figure 2* illustrates the most frequently-listed six goals of the After-School Programs supported by Safe Schools Appropriation funds for 2000-2001.

Figure 2 - Top Six District Goals of After-School Programs



After-School Program Partners

Throughout the State, school districts collaborate with a variety of external agencies and organizations to offer and operate after-school programs for their students. **Table 7** lists the agencies and programs that work with school districts and the number of districts that have collaborated with them over the past three school years.

Table 7-After-School Program Partners and Number of School Districts 1998-99 to 2000-01

Partner	No. of Districts 1998-99	No. of Districts 1999-00	No. of Districts 2000-01
Associated Marine Institute	0	3	2
Boys and Girls Clubs	9	12	12
Boy and Girl Scouts	10	7	4
Business Partners	12	13	13
Civic Organizations*	N/R	N/R	3
Department of Juvenile Justice	10	9	6
City Government (Parks & Recreation)	15	10	9
Community Colleges	5	4	5
County Government (Parks & Recreation)	7	9	9
Department of Children & Families	5	5	3
Faith-based Groups	8	8	7
Local Law Enforcement	19	15	16
Mental Health Agencies	8	7	3
Military Bases	3	2	1
Practical and Cultural Education for Girls (PACE)	4	2	4
Private Industry Council	4	4	1

Partner	No. of Districts 1998-99	No. of Districts 1999-00	No of Districts 2000-01
PTA/PTO	5	7	11
School Volunteers	14	11	13
State Attorney's Office	5	6	5
Substance Abuse Agencies	11	6	6
Universities/Colleges	7	6	5
Urban League	4	3	3
YMCA/YWCA	9	9	9
Other	10	12	9

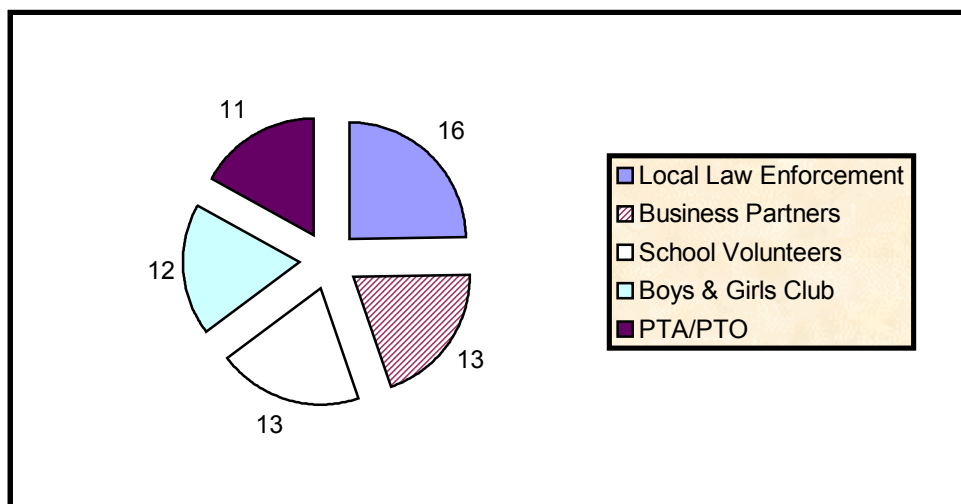
*N/R Civic Organizations were not a category in the 1998-99, or the 1999-00 Safe Schools Appropriation Report

Other After-School Program Partners reported by school districts in 2000-2001 include:

- Big Brothers/Big Sisters
- Bridge of Northeast Florida
- Concerned African Women, Inc.
- Cooperative Extension Services
- Crane Point Hammock Museum
- Cultural Arts Affairs
- Jacksonville Children's Commission
- Junior Achievement
- Kiwanis Club
- Medallion Schools
- Police Athletic League (PAL)
- R Club, Incorporated
- Sierra Club & Expeditionary Learning
- South Florida Inner City Games
- USDA (Federal Grant)
- World Literacy Crusade

The most prevalent partners in 2000-2001 are prevention-oriented organizations such as youth organizations and local law enforcement agencies. **Figure 3** illustrates the five categories of agencies and organizations that collaborate with school districts to operate After-School Programs supported by Safe Schools Appropriation funds for 2000-2001.

Figure 3 – Most Prevalent Five After-School Program Partners 2000-2001



ALTERNATIVE PLACEMENT PROGRAMS FOR ADJUDICATED YOUTHS

The alternative placement program for adjudicated youth is the second largest category in which Safe Schools Appropriation funds are expended. In 2000-2001, districts spent approximately 22% of the Safe Schools Appropriation funds on developing and maintaining alternative placement programs.

Collectively, Safe Schools funds supported 52 alternative placement programs that served approximately 8,000 students on and off school campuses within 24 districts. *Table 8* provides a district analysis of the number of students served, the number of programs in each district, the school location of the programs, and the percentage and amount of Safe Schools funds expended on these programs.

Table 8 - Analysis of Alternative School Programs Expenditures for Adjudicated Youth

District	No. of Students Served	No. of Programs Housed on Campus	No. of Programs Housed off Campus	Total No. of Programs in District	Amount of Safe Schools Funds	Amount of Other Funds
Baker	40	2	0	2	\$40,274	\$31,250
Bay	154	0	3	3	\$122,330	\$499,262
Brevard	325	0	3	3	\$1,094,138	0
Broward	4,308	3	0	3	\$389,650	0
Charlotte*	28	0	1	1	0	\$64,368
Clay	2,030	6	0	6	\$114,500	0
Collier	191	1	2	3	\$427,778	\$572,429
Gadsden	85	3	0	3	\$20,000	0
Glades**	N/R	N/R	N/R	N/R	\$15,402	0
Hardee**	N/R	1	0	1	\$27,812	0
Hendry	135	0	2	2	\$210,517	\$430,346
Holmes	33	0	1	1	\$15,000	\$261,875
Jefferson	45	1	0	1	\$24,000	\$38,000
Lake	73	0	3	3	\$20,000	\$100,000
Lee	0	0	0	0	\$374,320	0
Liberty	32	1	0	1	\$1,400	\$131,318
Manatee	458	0	8	8	\$46,409	\$2,064,000
Monroe	0	4	2	6	\$84,218	\$400,000
Orange	N/R	N/R	N/R	N/R	\$863,568	0
Osceola	91	0	1	1	\$273,361	\$238,015
Palm Beach	58	0	1	1	\$371,762	0
Polk	120	2	0	2	\$153,023	0
Putnam**	N/R	N/R	N/R	N/R	\$108,316	0
Taylor	70	1	0	1	\$27,244	\$100,000
TOTALS	8,276	25	26	53	\$5,041,022	\$4,930,863

*Alternative School Programs for Adjudicated Youth funded from other sources.

**N/R = District did not report data.

Program Specifics

The 2000-2001 survey asked school districts to identify the use of Safe Schools appropriations for Alternative Placement Programs for adjudicated youth. Throughout the State, each district used the Safe Schools Appropriation funds to support varied alternative placements for adjudicated youth programs. **Table 9** provides the five largest categories in which districts expended the funds and the number of districts that expended funds in each category. Fifty-eight percent (58%) of the school districts (14) funding Alternative School Programs reported using their funds to maintain existing programs.

Table 9 - Alternative Placement Programs for Adjudicated Youth Expenditure Categories

Expenditure Categories	No. of Districts 2000-01
Maintained existing programs	14
Enhanced (improved) existing programs	5
Used other district programs	2
Created new programs	1
Expanded existing programs	0

Data for previous years are not available because the 2000-2001 survey asked for Alternative Placement programs for only adjudicated youth.

Alternative Placement Program Goals

An additional item added to the 1999-2000 survey requested districts to identify the primary goals of the Alternative Placement Programs within districts. Most districts indicated multiple goals for their Alternative Placement Programs. **Table 10** provides the primary goals of alternative placement programs identified by districts and the number of school districts which reported these goals for the 2000-2001 school year.

Table 10 - Primary Goals - Alternative School Programs for Adjudicated Youth

Primary Goals	No. of Districts
Removal of violent offenders from campus	15
Provide an alternative placement in lieu of expulsion	15
Provide a problem assessment referral to outside agency for substance abuse, mental health services, etc.	9
Other*	7
Provide a “cooling-off” period	6

*Other Primary Goals

- Aftercare and supervision by Juvenile Probation Officers (JPOs)
- Education of incarcerated students/youth
- Provide an instructional program leading to high school graduation
- Remedial academic skills and truancy intervention

The most prevalent district goals of the alternative placement programs were removing violent offenders (15 districts) and providing alternative placements in lieu of expulsion (15 districts). The third most frequent goal reported was providing a problem assessment referral to outside agencies for substance abuse, mental health (9 districts), etc. The goals in the “Other” category included providing aftercare and supervision by Juvenile Probation Officers (JPOs), education of incarcerated students/youth, remedial academic skills and truancy intervention services, and providing an instructional program leading to high school graduation.

SCHOOL SAFETY AND SECURITY PROGRAM ACTIVITIES

Due to the increased national attention on school safety incidents, school safety and security has become a primary concern for schools, districts, and state administrators. The most frequent use of Safe Schools Appropriation funds is to support school safety and security program activities. The following tables and graphs provide detailed information on how the Safe Schools Appropriation funds were expended on safety and security activities for the year 2000-2001. Additionally, the 2000-2001 survey expanded the focus on school safety and security to incorporate several data elements that are requested frequently. These elements include detailed information on School Resource Officers (SROs); districts' use of surveillance cameras and metal detectors; and how districts measure the effectiveness of these activities.

In 2000-2001, approximately 62% of the Safe Schools Appropriation funds was spent on school safety and security program activities, and 82% for safety activities when Other Improvements to Make a School Safe are added. Sixty-nine (69) of 71 districts [including four Developmental Research (lab) Schools] reported using a portion of the Safe Schools funds to provide safety and security in approximately 2,000 schools that benefit over two million students. Of the 69 districts, twenty-nine (41%) used 100% of their allocation on school safety and security program activities. *Table 11* provides a district summary of the number of schools and the percentage, the amount of Safe Schools Appropriation funds expended during the 2000-2001 school year and percent of funds for other school safety improvements.

Table 11 - Analysis of School Safety and Security Program Activities

	Total No. of Schools Receiving Resources	Percent of Safe Schools Funds for Safety and Security	Amount of Funding for School Safety and Security	Percent of Safe Schools Funds for Other Safety Improvements	Amount of Safe Schools Funding for Other Safety Improvements
Alachua	10	36%	\$439,937	64%	\$797,457
Baker	2	39%	\$40,000	0%	0
Bay	36	81%	\$564,654	2%	\$11,872
Bradford	4	87%	\$101,256	15%	\$15,000
Brevard	88	57%	\$1,065,284	0%	0
Broward	222	68%	\$4,917,296	13%	\$270,775
Calhoun	5	100%	\$65,811	0%	0
Charlotte	9	100%	\$383,226	0%	0
Citrus	9	100%	\$335,561	0%	0
Clay	29	79%	\$431,020	0%	0
Collier	20	44%	\$389,519	1%	\$12,000
Columbia	13	100%	\$285,418	0%	0
DeSoto	6	95%	\$142,671	0%	0
Dixie	2	100%	\$79,841	0%	0
Duval	51	79%	\$3,211,752	0%	0
Escambia	25	76%	\$950,798	24%	\$293,115
Flagler	6	100%	\$162,770	0%	0
Franklin	5	53%	\$32,157	47%	\$28,941
Gadsden	8	61%	\$110,000	28%	\$50,000
Gilchrist	4	100%	\$70,107	0%	0
Glades	1	68%	\$39,950	0%	0
Gulf	5	100%	\$71,566	0%	0
Hamilton	1	100%	\$77,705	0%	0
Hardee	7	56%	\$73,647	23%	\$29,825
Hendry**	0	0%	0	0%	0
Hernando	4	39%	\$161,725	61%	\$250,120
Highlands	15	100%	\$356,410	0%	0

	Total No. of Schools Receiving Resources	Percent of Safe Schools Funds for Safety and Security	Amount of Funding for School Safety and Security	Percent of Safe Schools Funds for Other Safety Improvements	Amount of Safe Schools Funding for Other Safety Improvements
Hillsborough	187	63%	\$3,342,205	5%	\$266,576
Holmes	9	19%	\$15,000	63%	\$50,558
Indian River	5	100%	\$442,479	0%	0
Jackson	18	100%	\$222,071	0%	0
Jefferson	3	66%	\$45,986	0%	0
Lafayette	2	100%	\$41,833	0%	0
Lake	47	94%	\$731,500	3%	\$26,825
Lee	71	47%	\$748,079	4%	\$74,241
Leon	44	94%	\$1,143,482	0%	0
Levy	13	50%	\$89,736	50%	\$88,496
Liberty	4	76%	\$31,444	21%	\$8,263
Madison	NR	100%	\$111,567	0%	0
Manatee	46	66%	\$702,785	0%	0
Marion	46	40%	\$390,072	60%	\$587,063
Martin	18	100%	\$423,378	0%	0
Miami-Dade	344	42%	\$5,900,000	54%	\$7,437,044
Monroe	5	60%	\$169,198	10%	\$30,160
Nassau	6	100%	\$234,096	0%	\$40
Okaloosa	16	66%	\$425,571	44%	\$219,233
Okeechobee	5	100%	\$117,786	0%	0
Orange	150	42%	\$2,063,111	41%	\$2,033,303
Osceola	30	69%	\$618,337	0%	0
Palm Beach	149	34%	\$1,943,571	37%	\$2,132,020
Pasco	53	60%	\$749,310	36%	\$443,423
Pinellas	141	100%	\$3,868,989	0%	0
Polk	115	70%	\$1,785,268	24%	\$612,091
Putnam	3	11%	\$40,379	27%	\$97,188
St. Johns	8	100%	\$448,499	0%	0
St. Lucie	35	100%	\$801,834	0%	0
Santa Rosa	31	100%	\$440,749	0%	0
Sarasota	31	100%	\$1,065,284	0%	0
Seminole	54	100%	\$1,373,744	0%	0
Sumter	1	44%	\$54,494	33%	\$39,546
Suwannee	3	74%	\$119,008	0%	0
Taylor	2	7%	\$7,413	17%	\$18,000
Union	4	100%	\$59,859	0%	0
Volusia	17	77%	\$1,446,155	0%	0
Wakulla	8	100%	\$110,139	0%	0
Walton	14	100%	\$140,153	0%	0
Washington	0	0%	0	100%	\$67,484
FAMU LAB	1	100%	\$34,826	0%	0
FAU LAB	1	92%	\$31,720	0%	0
FSU LAB	1	100%	\$41,345	3%	\$1000
UF LAB	NR	100%	\$40,120	0%	0
Total	2,221	62%	\$47,172,656.00	20%	\$15,991,619

*N/R (No Response)—District did not provide data.

**Allocation used for “Other Improvements to Make a School Safe” or “Alternative Schools for Non-Adjudicated Youth”
Please note district funding amounts may include funds carried forward from previous year.

School Safety and Security Program Specifics

In 2000-2001, sixty-nine of 71 school districts (including four lab schools) reported spending a total of \$47.2 million for Safety and Security Programs. Of the 69 districts using funds for School Safety and Security program activities, sixty-two percent of their total allocation was spent for these activities.

Hendry and Washington districts were the exceptions. They used their allocations for other improvements to make a school safe (Hendry) and alternative placement for non-adjudicated youth (Washington).

A new question in the 2000-2001 survey asked school districts to identify the method(s) used to measure the effectiveness of each school safety and security activity supported by Safe Schools Appropriation Funds. **Table 12** summarizes the types of safety and security activities implemented and the data sources reported. The number of districts that identified activity types are indicated in parentheses.

Table 12- Measuring the Effectiveness of School Safety and Security Program Activities

Safety and Security Activity Supported by Safe Schools Funds	Types of Activity and (No. of districts)	Objective Data Source*	Subjective Data Source**
A. Emergency Preparedness Planning and Implementation	<ul style="list-style-type: none"> • Crisis Intervention Plan Implementation (16) • Mock Disaster Drills (5) • Critical Response Training (3) • FASRO Conference Expenses (2) 	<ul style="list-style-type: none"> • Performance Data from Crisis Management and other Disaster Drills • “Table Top” scenarios • Crisis Incident Reports 	<ul style="list-style-type: none"> • Safety and Security Self-Assessment • Interviews and Debriefing with Involved Parties • Focus Group Data • Climate Survey Results
B. Establishing a Safe, Nurturing, Learning Environment	<ul style="list-style-type: none"> • Teacher/Staff/Resource Personnel Training (24) • Assessing School Climate (21) • Developing Uniform Discipline Procedures (19) • Guidance Services (2) • In-school Suspension Programs (2) • Evaluation Activities (2) 	<ul style="list-style-type: none"> • Pre-test/Posttests • SESIR and Discipline Data • Audit Response Matrix • Safety Report • Site Assessments • Classroom Observations • Safety Hotline Reports • Proven Program use 	<ul style="list-style-type: none"> • Interview Data with Stakeholders • Climate Surveys • Participant Satisfaction Data • Focus Groups • School Advisory Council (SAC) Meetings • School Leadership Team • SDFS Program Evaluation

Safety and Security Activity Supported by Safe Schools Funds	Types of Activity and (No. of districts)	Objective Data Source*	Subjective Data Source**
C. School Safety Equipment, Resources, and Personnel	<ul style="list-style-type: none"> • School Resource Officers or other campus Law Enforcement (57) • Surveillance Cameras (23) • Radio/communication Equipment (22) • Security Personnel (not SRO's) (24) • School Facility/Safety Improvements (16) • School Safety Hotline(16) • Safe School Coordinators (11) • Trained dogs for Drugs/guns (11) • Metal Detectors (9) • Staff support for in-School Suspension (2) • Crossing Guards (2) • Behavior Resource Teacher (2) 	<ul style="list-style-type: none"> • Annual SRO PerformanceAssessment • Performance Checklist of Desired Actions • Discipline Data: No. of Suspensions and Expulsions • School Advisory Council (SAC) Survey • SESIR Data • Bus Video Usage Data • Discipline Referral Data • Safety Reports • Telephone logs by SROs • No. of Incidents at School Crossings 	<ul style="list-style-type: none"> • Climate Surveys • School Safety and Security Self-Assessment Data • Interviews w/ Parents and Transportation Staff/key Informants • Focus Groups • Interviews with School District Leadership
D. Student Programs	<ul style="list-style-type: none"> • Violence Prevention Instruction/activities (20) • Conflict Resolution Instruction (18) • Peer Mediation (14) • Student Assistance Program (13) • Student to Student Violence Prevention Programs (11) • Teen Court (6) • Big Brother, Big Sister (1) • Mock DUI's (1) 	<ul style="list-style-type: none"> • Discipline Data • SESIR Data • No. of Referrals • Counselor's Log 	<ul style="list-style-type: none"> • Focus Groups • School Climate Survey
E. School Improvement Planning for Safety	<ul style="list-style-type: none"> • Assistance for the Development of School Improvement Plans for Goal 5 School Safety (12) 	<ul style="list-style-type: none"> • SESIR • Critical Incident Data • Discipline Data • No. of schools utilizing Positive Behavior Support Systems/Single School Culture and Data After Implementation 	<ul style="list-style-type: none"> • School Climate Survey • Self-Assessments

Safety and Security Activity Supported by Safe Schools Funds	Types of Activity and (No. of districts)	Objective Data Source*	Subjective Data Source**
F. Data System Improvements	<ul style="list-style-type: none"> • SESIR Incident Reporting System/Data Collection (16) • Truancy and Attendance Data System (1) • Internet "Firewall" (1) 	<ul style="list-style-type: none"> • SESIR and Discipline Reports • Student Referral Records • Data Accuracy Rates 	

*Objective: independently verifiable data; i.e., number of weapons-related incidents from SESIR data

**Subjective: opinion data; i.e., responses on School Climate Survey

Types of School Safety and Security Program Activities

With the majority of the Safe Schools Appropriation funds expended for school safety and security program activities, the types of activities supported vary among districts. *Table 13* identifies 22 activity categories that districts supported using Safe Schools funds and the percent change in numbers of districts participating in those activities from 1999-2000. The activities are ordered by frequency of participation/use in 2000-2001.

Table 13 Prevalence of School Safety and Security Activities

School Safety and Security Activities	No. of Districts in 1998-99	No. of Districts in 1999-00	No. of Districts in 2000-01	%Change From 99-00
1. School Resource Officers	50	57	57	0
2. Teacher/Staff Training	26	31	25	-19%
3. Surveillance Cameras	15	14	24	+64%
4. Development/Implementation of Crisis Management Plans	N/A	23	23	0
5. Security Personnel (Not SRO)	25	31	23	-23%
6. Other Security Equipment	11	16	21	+29%
7. Assessing School Climate	N/A	N/A	21	N/A
8. Violence Prevention Curriculum	30	17	19	+12%
9. Discipline Strategies and Implementation	N/A	15	19	+27%
10. Other*	N/A	14	18	+29%
11. Conflict Resolution	N/A	N/A	18	N/A
12. Renovation of Building for Improved Safety	9	10	16	+60%
13. School Safety Hot Line	N/A	9	16	+78%
14. Discipline Incident Reporting Data Collection	14	7	15	+114%
15. Peer Mediation	19	12	14	+17%
16. Student Assistance Programs	16	6	14	+133%
17. Development of School Improvement Plans	N/A	28	12	-57%
18. Student Crime Watch	14	11	12	+9%
19. School-based Safe School Coordinators	N/A	N/A	11	N/A

School Safety and Security Activities	No. of Districts in 1998-99	No. of Districts in 1999-00	No. of Districts in 2000-01	%Change From 99-00
20. Trained Dogs to Search for Drugs/Guns	N/A	N/A	10	N/A
21. Metal Detectors	8	7	9	+29%
22. Teen Court	6	3	6	+100%

N/A—Item was not asked on the 1998-1999 or the 1999-2000 Safe Schools Appropriation Survey.

*Other safety/security activities reported by two or fewer districts in 2000-2001:

- In-School Suspension at Elementary level
- External Evaluation Services
- Personnel for In-School Suspension
- Crossing Guards; Support Staff
- Facilities for Security Personnel
- Drug Prevention Program
- FASRO Conference Expenses
- Data System Improvement
- Guidance Services

The use of school resource officers was the most frequent expenditure reported by 57 of the districts, (80% of total districts) of the School Safety and Security Program Activities. The following areas of expenditure were reported by 30% or more of the districts: teacher and staff training (36%), surveillance cameras (34%), development/implementation of crisis management plans (33%), other security personnel (33%), other security equipment (30%), and assessing school climate (30%)

The largest percent increase in activities from 1999-2000 was in Student Assistance Programs (133%) and Discipline Incident Reporting Data Collection (114%).

School Resource Officers (SROs), School Campus Police, or other School Law Enforcement Officers (LEOs)

An area of increasing public interest is the presence of school resource officers (SROs) and other school law enforcement officers (LEOs) in schools across the state of Florida. **Table 14** reports the number of school resource officers and law enforcement officers (SROs/LEOs) at each school level within districts. “Multi-level” refers to SROs/LEOs who are used at various school levels and who visit several schools throughout the week, since there is not enough funding to place one SRO/LEO permanently at each school within a district.

Table 14 also indicates the percent of the costs of SROs/LEOs paid by Safe Schools Appropriation funds and/or by other funding sources, both public and private. Statewide, fifty-two percent of SROs/LEOs were paid from SSA funds and 48% of funding for SRO’s came from other sources for 2000-2001.

Table 14- Presence of SROs/LEOs in Districts

District	#of SROs /LEOs in High School	#of SROs /LEOs in Middle Schools	#of SROs /LEOs in Elementary Schools	#of SROs /LEOs in Multi-Level Schools	#of SROs /LEOs in Alternative Schools	Total # of SROs/LEOs in District	% SROs Paid by Safe Schools Funds	% Paid by Other Funding
Alachua	10	8	2	1	4	25	44%	56%
Baker	1	1	1	0	0	3	50%	50%
Bay	8	6	0	2	3	19	95%	5%
Bradford	1	0	0	0	1	2	50%	50%
Brevard	12	13	0	0	5	30	50%	50%
Broward	24	35	63	0	3	125	0%	100%
Calhoun	0	0	0	1	0	1	43%	57%
Charlotte	3	4	0	0	2	9	100%	0%

District	#of SROs /LEOs in High School	#of SROs /LEOs in Middle Schools	#of SROs /LEOs in Elementary Schools	#of SROs /LEOs in Multi-Level Schools	#of SROs /LEOs in Alternative Schools	Total # of SROs/LEOs in District	% SROs Paid by Safe Schools Funds	% Paid by Other Funding
Citrus	3	4	1	0	1	9	100%	0%
Clay	5	4	4	1	1	15	50%	50%
Collier	10	8	14	1	2	35	0%	100%
Columbia	2	2	0	4	0	8	40%	60%
DeSoto	1	1	0	1	0	3	100%	0%
Dixie	1	0	0	0	0	1	0%	100%
Duval	17	23	7	1	3	51	66%	34%
Escambia	8	12	0	0	1	21	50%	50%
Flagler	2	1	1	1	0	5	80%	20%
Franklin	3	3	2	0	0	8	50%	50%
Gadsden	4	1	4	0	0	9	0%	100%
Gilchrist	0	0	0	2	0	2	0%	100%
Glades	0	0	0	1	0	1	35%	65%
Gulf	2	0	0	0	0	2	80%	20%
Hamilton	1	0	0	0	0	1	100%	0%
Hardee	0	0	0	2	0	2	85%	15%
Hendry	2	2	0	0	0	4	0%	100%
Hernando	3	4	0	0	0	7	57%	43%
Highlands	0	0	0	6	0	6	50%	50%
Hillsborough	20	36	0	7	0	63	63%	37%
Holmes	0	0	0	1	1	2	33%	67%
Indian River	2	3	1	1	1	8	50%	50%
Jackson	0	0	0	8	0	8	32%	68%
Jefferson	1	1	1	0	1	4	90%	10%
Lafayette	0	0	0	1	0	1	60%	40%
Lake	11	8	0	2	0	21	50%	50%
Lee	13	17	15	0	2	47	33%	67%
Leon	5	8	1	0	2	16	50%	50%
Levy	0	0	0	4	1	5	30%	70%
Liberty	0	0	0	1	0	1	100%	0%
Madison	2	0	0	2	1	5	80%	20%
Manatee	5	8	6	1	2	22	55%	45%
Marion	7	9	0	0	0	16	72%	28%
Martin	2	4	2	0	1	9	100%	0%
Miami-Dade	0	0	0	145	0	145	42%	58%
Monroe	3	1	0	0	0	4	11%	89%
Nassau	2	3	0	1	0	6	100%	0%
Okaloosa	4	8	0	2	2	16	50%	50%
Okeechobee	3	2	0	0	1	6	50%	50%
Orange	23	11	35	1	0	70	50%	50%
Osceola	6	6	14	3	0	29	50%	50%
Palm Beach	38	32	11	0	10	91	18%	82%
Pasco	9	11	5	1	2	28	50%	50%
Pinellas	25	25	0	3	3	56	70%	30%
Polk	0	0	0	0	0	0	75%	25%

District	#of SROs /LEOs in High School	#of SROs /LEOs in Middle Schools	#of SROs /LEOs in Elementary Schools	#of SROs /LEOs in Multi-Level Schools	#of SROs /LEOs in Alternative Schools	Total # of SROs/LEOs in District	% SROs Paid by Safe Schools Funds	% Paid by Other Funding
Putnam	3	3	0	0	5	11	33%	50%
St. Johns	4	5	5	1	1	16	54%	46%
St. Lucie	9	8	11	3	1	32	50%	50%
Santa Rosa	6	4	0	1	0	11	50%	50%
Sarasota	5	6	15	3	0	29	100%	0%
Seminole	7	11	5	0	2	25	50%	50%
Sumter	2	2	1	0	0	5	50%	50%
Suwannee	4	1	1	0	1	7	10%	90%
Taylor	1	1	1	0	1	4	25%	75%
Union	0	0	0	1	0	1	0%	100%
Volusia	11	10	0	0	2	23	74%	26%
Wakulla	1	2	1	0	1	5	75%	25%
Walton	3	2	0	1	1	7	50%	50%
Washington	2	2	0	0	0	4	0%	100%
FAMU DRS	0	0	0	1	0	0	95%	5%
FAU DRS	0	0	0	1	0	1	0%	100%
FSU DRS	0	0	0	1	0	1	91%	9%
PK Yonge DRS	0	0	0	1	0	1	0%	100%
Totals	362	382	230	222	71	1,266	52%	48%

*N/R (No Response)—District did not provide the data

Throughout the State, most districts collaborate with law enforcement agencies to provide SROs/LEOs and other security personnel in schools. *Table 15* provides a cumulative analysis that indicates the percentage of SROs/LEOs costs that are paid for by the districts using Safe Schools Appropriation funds. Forty-seven districts used Safe Schools Appropriation funds to pay for 50% or more of the SROs/LEOs costs in their schools. Districts reporting that Safe Schools funds covered less than 100% of the cost, utilized other funding sources. An average of 52% of SROs/LEOs was paid from Safe Schools funds, with 48% of the costs for SROs/LEOs paid by other funding.

Table 15 - Number of Districts Utilizing Safe Schools Funds for SROs/LEOs

Safe Schools Funds	# of Districts 1999-00	# of Districts 2000-01
Pay 75-100% of SROs/LEOs costs	19	18
Pay 50-74% of SROs/LEOs costs	25	29
Pay 25-49% of SROs/LEOs costs	8	11
Pay 0-24% of SROs/LEOs costs	9	13
No Response from District	10	0
TOTAL	71	71

Due to the change in the survey, comparison data from 1998-1999 are not available.

Due to the frequent collaboration between districts and law enforcement agencies, the costs of SROs are often shared between the two entities to offset the financial burden for the districts.

Table 16 provides the most common funding sources (other than Safe Schools funds) for SROs and the number of districts that use those sources. The most common source of cost sharing for SROs is law enforcement agencies while others (11 districts) utilized general school district funds to cover the remaining costs.

Table 16 - Other Funding Sources for SROs

Funding Source	# of Districts 1999-2000	# of Districts 2000-2001
County Sheriff's Office	25	27
City Police Departments	8	14
General School District Funds	14	11
State and Federal Grants	5	4
Not Specified	NA	20

Note: some districts may use multiple funding sources

Security Equipment

As school safety and security becomes an ever-increasing priority within school districts, upgrading and using effective security technology is evidenced. Metal detectors and surveillance cameras are the most common types of security equipment used by districts to monitor and enforce safety and security on school campuses. **Table 15** provides information on the number of metal detectors present in the various school levels within districts. In schools across the State, 984 metal detectors were used to detect weapons brought to schools in 2000-2001. Of the metal detectors, 99% are hand-held, which allows SROs/LEOs and other security personnel to be very mobile during security checks. Total detectors increased in 2000-2001 by 32% since 1999-2000.

Table 17 - Number and Type of Metal Detectors by School Level

School Level	Hand-Held		Walk-Through		Total Detectors	
	1990-00	2000-01	1990-00	2000-01	1990-00	2000-01
High School	275	410	4	6	279	416
Middle School	319	351	0	4	319	355
Elementary School	43	122	0	1	43	123
Other	100	87	4	3	104	90
TOTALS	737	970	8	14	745	984

Due to the change in the survey, comparison data from 1998-1999 are not available.

Table 17 provides detailed information on the number of surveillance cameras present at the different school levels and in school buses within districts. The number of cameras increased by 27% from 1999-2000 school year. Over 11,000 cameras were present in school districts statewide in 2000-2001, with the greatest number of cameras (34%) on school buses, which assists in monitoring the safety and security of students to and from school. The second largest number of cameras is reported at the high school level (32%).

Table 18 - Number of Surveillance Cameras by School Level

School Level	No. of Cameras 1999-2000	No. of Cameras 2000-2001
High School	1,992	3,448
Middle School	1,401	1,948
Elementary School	1,084	1,411
School Buses	2,643	3,843
Other	340	729
TOTAL	7,460	11,379

Due to the change in the survey, comparison data from 1998-1999 are not available.

The figures reflected in the two previous tables (17 and 18) do not necessarily reflect equipment that was purchased using Safe Schools Appropriation funds. As indicated in Appendix D, districts vary considerably in how they choose to expend the funds. The data in this report do not distinguish what equipment was purchased with specific funds. Instead, the data provide a general descriptive report on the presence of security equipment utilized within districts since the Department of Education is asked frequently to provide this information.

Critical Issues for School Safety

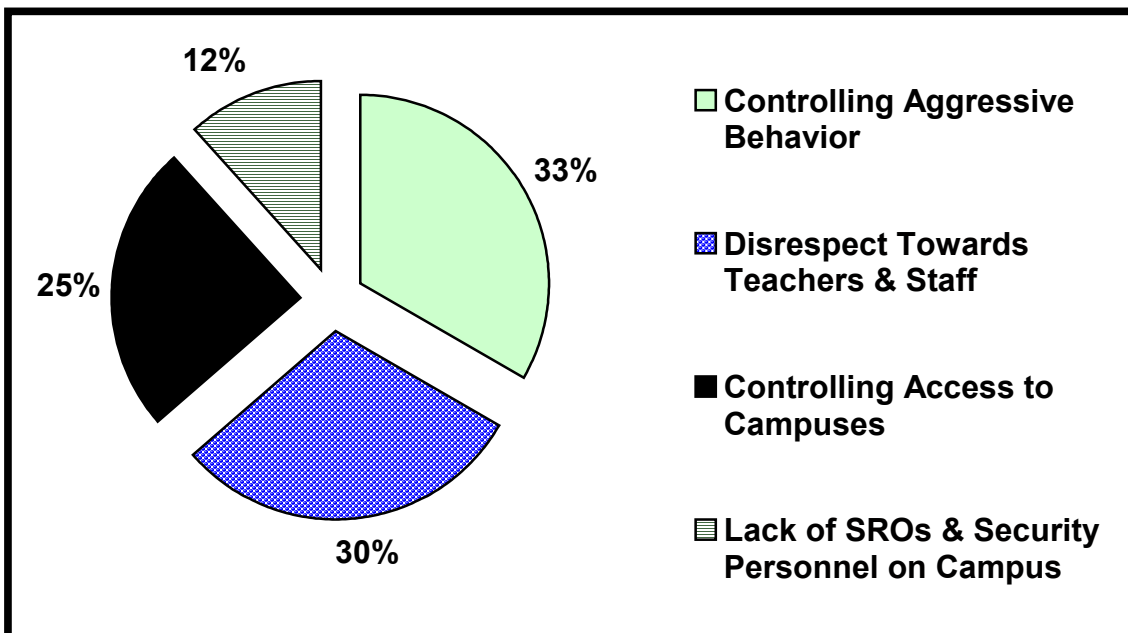
Districts were asked to rank the three most critical school safety issues affecting their schools. *Table 19* provides a summary of the top safety issues for each priority. In 1999-2000 several of the same critical safety issues were in the top three ratings for multiple priorities. “Disrespect Towards Teachers” and “Controlling Access to Campus,” were critical issues identified by districts for all three priorities. Other critical safety issues that were chosen frequently and were present in at least two priorities were “Controlling Aggressive Behavior,” and the “Lack of SROs and Security Personnel on Campus.”

**Table 19 - Types of School Safety and Security Program Activities
Critical Safety Issues**

Priority #1	1999-2000 No. of Districts	2000-2001 No. of Districts
Controlling Aggressive Student Behavior	17	19
Controlling Access to Campus	15	11
Disrespect Towards Teachers and Staff	14	11
Lack of SROs & Security Personnel on Campus	-	10
Priority #2		
Disrespect Towards Teachers and Staff	17	16
Controlling Aggressive Behavior	18	15
Controlling Access to Campus	-	9
Lack of Security Equipment	-	8
Priority #3		
Controlling Access to Campus	14	12
Disrespect Towards Teachers and Staff	11	12
Lack of Security Equipment	-	10
Lack of SROs & Security Personnel on Campus	-	10
Controlling Aggressive Behavior	-	9

Figure 4 provides a visual analysis of the selection of issues identified by districts. The numbers in the figure represent the percent of districts that ranked the issue as one of their three priorities. Disciplinary issues of “Controlling Aggressive Behavior” and “Disrespect Towards Teachers and Staff” represent 63% of the safety concerns identified.

Figure 4 - Top Four Critical Safety Issues



SUMMARY

The 1999-2000 Safe Schools Appropriation proviso language remained the same in 2000-2001 as that in 1999-2000, with the exception that the appropriation amount increased from \$70,350,000 in 1999-2000 to \$75,350,000, an increase of seven percent (7%).

Most districts expended the majority of their Safe Schools Appropriation funds (62%) for safety and security activities and other improvements to make the school safe, continuing a trend of the previous four years of increased spending in this category. Within the safety and security activities category, districts spent the majority of funds for school resource officer services. Forty-seven districts (66%) used Safe Schools Appropriation funds to pay for 50% or more of the SROs/LEOs costs in their schools. Nine percent (9%) of Safe Schools funds was expended for alternative programs for adjudicated youth, and nine percent (9%) was spent for after-school programs.

Districts identified the three most critical school safety issues affecting their schools as:

- Priority: #1 - “Controlling Aggressive Student Behavior”
- Priority #2 - “Disrespect Towards Teachers and Staff”
- Priority #3 - “Controlling Access to Campus”

Sixty-two percent (62%) of the safety concerns deal with student behavior issues.

As part of a new data collection question in the 2000-2001 survey, districts reported on methods used to determine the effectiveness of their safety and security activities/strategies. Responses indicate use of both objective data sources such as proven program use and SESIR data as well as subjective data sources such as a school climate survey results and interview data.

While the current report provides information on each district’s use of Safe Schools Appropriation funds, it does not provide insight into the reasons for annual changes in expenditure categories.

APPENDICES

APPENDIX A

Safe Schools Appropriation Proviso Language

Proviso in 2000-2001 General Appropriation Act

From the funds provided in Specific Appropriation 78, \$75,350,000 is provided for Safe Schools activities and shall be allocated as follows: \$30,000 shall be distributed to each district, and the remaining balance shall be allocated as follows: two-thirds based on the latest official Florida Crime Index provided by the Department of Law Enforcement and one-third based on each district's share of the state's total weighted student enrollment. Safe Schools activities include (1) after-school programs for middle school students, (2) other improvements to enhance the learning environment, including implementation of conflict resolution strategies, (3) alternative school programs for adjudicated youth, and (4) other improvements to make the school a safe place to learn. Each district shall determine, based on a review of its existing programs and priorities, how much of its total allocation to use for each authorized Safe Schools activity.

Proviso in 1999-2000 General Appropriation Act

From the funds provided in Specific Appropriation 109, \$70,350,000 is provided for Safe Schools activities and shall be allocated as follows: \$30,000 shall be distributed to each district, and the remaining balance shall be allocated as follows: two-thirds based on the latest official Florida Crime Index provided by the Department of Law Enforcement and one-third based on each district's share of the state's total weighted student enrollment. Safe Schools activities include (1) after-school programs for middle school students, (2) other improvements to enhance the learning environment, including implementation of conflict resolution strategies, (3) alternative school programs for adjudicated youth, and (4) other improvements to make the school a safe place to learn. Each district shall determine, based on a review of its existing programs and priorities, how much of its total allocation to use for each authorized Safe Schools activity.

Proviso in 1998-1999 General Appropriation Act

From the funds provided in Specific Appropriation 117, \$50,350,000 is provided for the Safe Schools activities and shall be allocated as follows: two-thirds shall be based on the latest official Florida Crime Index provided by the Department of Law Enforcement and one-third shall be based on each district's share of the state's total weighted student enrollment. Safe Schools activities include (1) after-school programs for middle school students, (2) other improvements to enhance the learning environment, including implementation of conflict resolution strategies, and (3) alternative school programs for adjudicated youth. Each district shall determine, based on a review of its existing programs and priorities, how much of its total allocation to use for each authorized Safe Schools activity.

Proviso in 1997-1998 General Appropriation Act

From the funds provided in Specific Appropriation 105, \$50,350,000 is provided for Safe Schools activities and shall be allocated as follows: two-thirds based on the latest official Florida Crime Index provided by the Department of Law Enforcement and one-third shall be based on each district's share of the state's total weighted student enrollment. Safe Schools activities include (1) after-school programs for middle school students, (2) other improvements to enhance the learning environment, including implementation of conflict resolution strategies, and (3) alternative school programs for adjudicated youth. Each district shall determine, based on a review of its existing programs and priorities, how much of its total allocation to use for each authorized Safe Schools activity. Districts may use funds provided in Specific Appropriation 105 for authorized Safe Schools activities and to support any other instructional activity designated by the district school board.

NOTE: Underlined language is new from 1999-2000 to 2000-2001.

Proviso in 1996-1997 General Appropriation Act

From the funds provided in Specific Appropriation 140, \$50,350,000 is provided for Safe Schools activities and shall be allocated as follows: two-thirds based on the latest official Florida Crime Index provided by the Department of Law Enforcement, and one-third shall be based on each district's share of the state's total weighted student enrollment. Safe Schools activities include (1) after-school programs for middle school students, (2) other improvements to enhance the learning environment, including implementation of conflict resolution strategies, and (3) alternative school programs for adjudicated youth. Each district shall determine, based on a review of its existing programs and priorities, how much of its total allocation to use for each authorized Safe Schools activity. Districts may use funds provided in Specific Appropriation 140 for authorized Safe Schools activities and to support any other instructional activity designated by the district school board.

Proviso in 1995-1996 General Appropriation Act

From the funds provided in Specific Appropriation 150, \$70,350,000 is provided for Safe Schools activities and shall be allocated as follows: 80% based on the latest official Florida Crime Index provided by the Department of Law Enforcement, and 20% shall be based on each district's share of the state's total weighted student enrollment. The entire amount of a district's allocation of Safe Schools funds must be used for authorized Safe Schools activities. Those activities are (1) after-school programs for middle school students, (2) other improvements to enhance the learning environment, and (3) alternative school programs for adjudicated youth. However, each district shall determine, based on a review of its existing programs and priorities, how much of its total allocation to use for each authorized Safe School activity. Each district may choose to use none, some, or all of its total allocation for a particular authorized activity.

Proviso in 1994-1995 General Appropriation Act

From the funds provided in Specific Appropriation 528, \$37,000,000 is provided for an after-school program designed for at-risk students in middle schools. Districts are encouraged to build on existing after-school programs within their communities. Districts are further encouraged to form partnerships with community groups in an effort to maximize resources. \$12,000,000 is provided for an Alternative School Program for adjudicated students, and \$11,350,000 for a security program that will provide for school resource officers, equipment, and other improvements to enhance the environment for learning. The school districts shall not use these funds to supplant programs that are currently operational in the school districts. The school districts shall develop plans for the implementation of the specified programs and each affected school shall report on the progress of the programs in their Annual School Report. However, in the case of school districts with FTE enrollment of 25,000 or less, the funds from Alternative School Program and the Security Program in Specific Appropriation 528 may be combined to allow the development of a coordinated plan for the district.

APPENDIX B

**STATE SAFE SCHOOLS APPROPRIATION
SURVEY OF ACTIVITIES
2000-2001 SCHOOL YEAR**

Survey Instrument

Return the completed survey by April 26, 2002, to:

Office of Safe Schools
 Florida Department of Education
 325 West Gaines Street, Room 301
 Tallahassee, Florida 32399-0400
 (850) 410-1667 SunCom 210-1667
 FAX: (850) 410-1796

**FLORIDA DEPARTMENT OF EDUCATION
 DIVISION OF PUBLIC SCHOOLS AND COMMUNITY EDUCATION
 BUREAU OF EQUITY, SAFETY, AND SCHOOL SUPPORT**

**STATE SAFE SCHOOLS APPROPRIATION
 SURVEY OF ACTIVITIES
 2000-2001 SCHOOL YEAR**

A. DISTRICT INFORMATION: Please respond to each of the following survey items.

District Name: _____

Contact Person: _____ SunCom: _____

Address: _____ Telephone: _____

_____ Fax: _____

_____ E-mail: _____

B. FISCAL SUMMARY: Please indicate the amount of Safe Schools Funding and the percent of the total Safe Schools Allocation spent on each of the following activities.

ACTIVITY	AMOUNT OF SAFE SCHOOLS FUNDING 2000-2001	PERCENT PROVIDED TO CHARTER SCHOOLS	TOTAL PERCENT SPENT
After-School Activities for Middle Schools	\$		
Alternative School Programs for Adjudicated Youth	\$		
School Safety and Security Activities	\$		
Other Improvements to Make a School Safe	\$		
Total Safe Schools Funding	\$		100%

C. GENERAL INQUIRIES: Rank the **three** most critical school safety concerns your district faces. (Put a "1", "2", and "3", with "1" being the highest).

- | | |
|--|---|
| _____ Controlling Access to Campus | _____ Lack of Alternative Schools for Adjudicated Youth |
| _____ Controlling Aggressive Student Behavior | _____ Lack of Before-School and After-School Programs |
| _____ Controlling Theft on Campuses | _____ Lack of Consistent, School-wide Discipline |
| _____ Controlling Vandalism on Campus | _____ Guns on Campuses |
| _____ Disrespect Towards Teachers and Staff | _____ Lack of SROs and Security Personnel on Campus |
| _____ Gang-Related Activities | _____ Racial Issues |
| _____ Lack of Security Equipment (Cameras/Metal Detectors) | _____ Other (Please Specify): _____ |
| _____ Overcrowding | |



**STATE SAFE SCHOOLS APPROPRIATION SURVEY OF ACTIVITIES
2000-2001 SCHOOL YEAR**

D. AFTER SCHOOL ACTIVITY SUMMARY:

1. No Safe Schools funds were used for after-school activities. (If you check this box, please go to Section E.)

Indicate **the number** of After-School programs supported by Safe Schools funds and total number of schools at each level.

AFTER-SCHOOL PROGRAMS 2000-2001 SCHOOLS	Number of Schools with After- School Programs Supported by Safe Schools	Number of Schools with After- School Programs Funded by Other Sources
Middle Schools with an After-School Program		
Elementary Schools with an After-School Program		

AFTER-SCHOOL PROGRAMS 2000-2001 STUDENTS	Number of Students Served by After-School Programs Supported by Safe Schools	Number of Students Served by After-School Programs Funded by Other Sources
Middle School Students Served by an After-School Program		
Elementary School Students Served by an After-School Program		

2. Indicate **the number** of After-School programs that provide the following:

PROGRAMS PROVIDING THE FOLLOWING ACTIVITIES 2000-2001	No. of Programs Providing Each Service
Transportation	
Open on Weekends and Holidays	
Snacks or Meals	

3. Indicate the primary goal(s) of the after-school programs in your district in 2000-2001 (check all items that apply):

<i>GOAL</i>	<i>GOAL</i>
<input type="checkbox"/> Provide Supervision	<input type="checkbox"/> Provide Mentoring
<input type="checkbox"/> Provide Enrichment	<input type="checkbox"/> Provide Counseling
<input type="checkbox"/> Provide Homework Assistance	<input type="checkbox"/> Provide Recreational Activities
<input type="checkbox"/> Provide Academic Remediation/Instruction	<input type="checkbox"/> Provide Violence Prevention
<input type="checkbox"/> Provide Social Skills Development (such as social skills, conflict resolution, etc.)	<input type="checkbox"/> Prevent Negative Influences (such as drug, alcohol, and/or tobacco use)

4. Identify the partners collaborating with your district for after-school activities in 2000-01 (check all that apply):

- | | | |
|---|---|---|
| <input type="checkbox"/> Associated Marine Institute | <input type="checkbox"/> Department of Juvenile Justice | <input type="checkbox"/> Substance Abuse Agencies |
| <input type="checkbox"/> Boys and Girls Club | <input type="checkbox"/> Local Law Enforcement | <input type="checkbox"/> University/College |
| <input type="checkbox"/> Boy Scouts and Girl Scouts | <input type="checkbox"/> Mental Health Agencies | <input type="checkbox"/> Urban League |
| <input type="checkbox"/> Business Partners | <input type="checkbox"/> Military Bases | <input type="checkbox"/> YMCA/YWCA |
| <input type="checkbox"/> Faith-based Groups | <input type="checkbox"/> Practical and Cultural Education for Girls | <input type="checkbox"/> Civic Organizations |
| <input type="checkbox"/> City Government (Parks & Recreation) | <input type="checkbox"/> Private Industry Council | <input type="checkbox"/> Other (Specify Below): |
| <input type="checkbox"/> Community College | <input type="checkbox"/> PTA/PTO | <input type="checkbox"/> State Attorney's Office |
| <input type="checkbox"/> County Government (Parks & Recreation) | <input type="checkbox"/> School Volunteers | |
| <input type="checkbox"/> Department of Children and Families | | |

**STATE SAFE SCHOOLS APPROPRIATION
SURVEY OF ACTIVITIES 2000-2001 SCHOOL YEAR**

ALTERNATIVE SCHOOL PROGRAMS FOR ADJUDICATED YOUTH ACTIVITY SUMMARY

1. No Safe School funds were used for alternative school programs for Adjudicated Youth (only) activities.
(If you check this box, please go to Section F.)
2. Please complete the following:

ALTERNATIVE SCHOOL PROGRAMS FOR ADJUDICATED YOUTH IN 2000-2001	NUMBER FUNDED FROM SAFE SCHOOLS FUNDING	AMOUNT OF FUNDING FROM OTHER SOURCE(S)
a. The number of alternative school programs for <u>Adjudicated Youth</u> in your district.		\$
b. The number of students served by alternative programs for <u>Adjudicated Youth</u> in your district.		
c. The number of alternative school programs for <u>Adjudicated Youth</u> that were housed on school campuses in your district.		
d. The number of alternative school programs for <u>Adjudicated Youth</u> that were housed off-site in your district.		

3. For each of the following items, check the **one item** that most closely reflects the use of Safe Schools appropriations funds for alternative school programs for Adjudicated Youth in your district:
 - _____ Maintain existing programs
 - _____ Enhance (improve) existing programs
 - _____ Expand existing programs
 - _____ Create new programs
 - _____ Other district programs (Please Specify): _____
4. Identify the primary goals of the alternative programs for Adjudicated Youth funded with Safe Schools funds for 2000-2001 (check all that apply):
 - _____ Removal of violent offenders from campus
 - _____ Provide an alternative placement in lieu of expulsion
 - _____ Provide an alternative to suspension
 - _____ Provide a "cooling-off" period
 - _____ Provide problem assessment/referral to outside agency for substance abuse, mental health, etc.
 - _____ Other (Please Specify): _____

**STATE SAFE SCHOOLS APPROPRIATION
SURVEY OF ACTIVITIES 2000-2001 SCHOOL YEAR**

SCHOOL SAFETY AND SECURITY ACTIVITY SUMMARY

1. **No Safe School funds were used for school safety and security activities.** (Please go to Section G, #2.)
2. Please complete the following:

SAFETY AND SECURITY SUMMARY	Number of Schools	Number of Students
Number of charter schools receiving safety and security resources supported by Safe Schools funds and number of students in those charter schools.		
Number of schools that are not charter schools receiving safety and security resources supported by Safe Schools funds and number of students in those non-charter schools.		

3. Due to increased attention to school safety and accountability for school safety expenditures, districts are asked to reflect their methods of measuring effectiveness of Safe Schools funds. In the table below, 1) put a check beside the types of safety or security activities supported by Safe Schools funds (check as many as apply) and 2) list the method you use to measure the effectiveness of each safety and security activity/strategy. You may use objective and/or subjective methods to measure effectiveness. If you are not yet collecting data, you may indicate this on the form. See examples of possible data sources below this chart. Please use as much space as necessary.

2000- 2001 SAFETY AND SECURITY ACTIVITIES SUPPORTED BY SAFE SCHOOLS FUNDS	S U P P O R T E D	METHOD OF MEASURING EFFECTIVENESS OF ACTIVITY/PROGRAM/STRATEGY		
		Objective Data Source*	Subjective Data Source**	Don't Yet Measure
	✓			
A. Emergency Preparedness				
Emergency Preparedness Planning and Implementation				
Other (Please specify)				

Data Examples:

***Objective (independently verifiable) Data**

- *SESIR Data, i.e., reduction in weapons possession*
- *Discipline Data, i.e., reduction in out-of-school suspensions, expulsions*
- *Performance Data, i.e., checklists of desired actions performed; summary ratings from demonstrated performance*

****Subjective (opinion) Data**

- *Interview data from key informants/customers*
- *Focus group data*
- *School Climate Survey, i.e., student responses*
- *School Climate Survey, i.e., teacher or parent responses*
- *Safety and Security Best Practices Self-Assessment*

**STATE SAFE SCHOOLS APPROPRIATION
SURVEY OF ACTIVITIES 2000-2001 SCHOOL YEAR**

2000- 2001 SAFETY AND SECURITY ACTIVITIES SUPPORTED BY SAFE SCHOOLS FUNDS	S U P P O R T E D	METHOD OF MEASURING EFFECTIVENESS OF ACTIVITY/PROGRAM/STRATEGY		
	✓	Objective Data Source*	Subjective Data Source**	Don't Yet Measure
B. Establishing a Safe, Nurturing, Learning Environment				
Assessing School Climate				
Implementing Prioritized Climate Needs/Improvements				
Developing Uniform Discipline Procedures				
Teacher/Staff/Resource Personnel Training				
Other (please specify)				
C. School Safety Equipment, Resources & Personnel				
Surveillance Cameras				
Radio/communication equipment				

**STATE SAFE SCHOOLS APPROPRIATION
SURVEY OF ACTIVITIES 2000-2001 SCHOOL YEAR**

2000- 2001 SAFETY AND SECURITY ACTIVITIES SUPPORTED BY SAFE SCHOOLS FUNDS	S U P P O R T E D	METHOD OF MEASURING EFFECTIVENESS OF ACTIVITY/PROGRAM/STRATEGY		
	✓	Objective Data Source*	Subjective Data Source**	Don't Yet Measure
C. School Safety Equipment, Resources & Personnel (Continued)				
Metal Detectors				
School Safety Hotline				
School Resource Officers (SROs) or other Campus Law Enforcement				
School-based Safe School Coordinators				
Security Personnel (Not SROs)				
School Facility/Safety Improvements				
Trained Dogs to Search for Drugs/Guns				
Other (Please specify)				

**STATE SAFE SCHOOLS APPROPRIATION SURVEY OF ACTIVITIES
2000-2001 SCHOOL YEAR**

2000- 2001 SAFETY AND SECURITY ACTIVITIES SUPPORTED BY SAFE SCHOOLS FUNDS	S U P P O R T E D	METHOD OF MEASURING EFFECTIVENESS OF ACTIVITY/PROGRAM/STRATEGY		
	✓	Objective Data Source*	Subjective Data Source**	Don't Yet Measure
D. Student Programs				
Conflict Resolution				
Peer Mediation				
Student Assistance Program				
Student-to-student violence prevention programs				
Teen Court				
Violence Prevention Instruction/Activities				
Other (please specify)				
E. School Improvement Planning for Safety				
Assistance for the Development of School Improvement Plans for Goal 5 School Safety and Environment				
F. Data System Improvements				
Incident Reporting System/Data Collection				
Other (please specify)				

**STATE SAFE SCHOOLS APPROPRIATION SURVEY OF ACTIVITIES
2000-2001 SCHOOL YEAR**

G. SCHOOL SAFETY AND SECURITY ACTIVITIES ADDITIONAL INFORMATION

1. Please indicate the **percent** of Safe Schools funding that was spent in this category on each activity below. Please indicate if you would be able to continue providing the activities you identified if you did not receive Safe Schools funds.

ACTIVITY	PERCENT OF SCHOOLS FUNDED	CONTINUATION OF ACTIVITY WITHOUT SAFE SCHOOLS FUNDS?	
		YES	NO
Developing and/or Purchasing Curriculum			
Training Teachers/Staff			
Planning for School Improvements			
Providing School Resource/School Safety Officers			
Purchasing/Maintaining Security Equipment			
Funding District-Level Position(s) for Safe Schools Activities			
Other (Please Specify):			
Total	100%		

2. Please indicate the number of School Resource Officers (SROs), School Campus Police Officers, or other School Law Enforcement Officers assigned to schools in your district in each category below. If one officer serves at more than one level, then **only** count him or her in the multi-levels category.

HIGH SCHOOLS		MIDDLE SCHOOLS		ELEMENTARY SCHOOLS		MULTI-LEVELS		ALTERNATIVE SCHOOLS	
No. of Officers	No. of Schools	No. of Officers	No. of Schools	No. of Officers	No. of Schools	No. of Officers	No. of Schools	No. of Officers	No. of Schools

3. If Safe Schools funding is used to partially or fully pay for school resource officers' salaries, please indicate what percentage of the position(s) is funded from Safe Schools funds and identify the other funding sources (for example, 1 SRO position—50% paid from Safe Schools Funds, 50% paid from County Sheriff's funds).

FUNDING SOURCE FOR SCHOOL RESOURCE OFFICERS	PERCENT
Safe Schools Funds	
Other Public Funding Source (Please Specify):	
Other Funding Source (Please Specify):	

4. What percent of your school resource officers/law enforcement officers are provided by private vendors?
_____%

**STATE SAFE SCHOOLS APPROPRIATION SURVEY OF ACTIVITIES
2000-2001 SCHOOL YEAR**

5. Please indicate the number of video surveillance cameras in use in your district. For school buses, please count only the actual cameras on school buses and do not count the fake cameras (empty shells).

HIGH SCHOOLS		MIDDLE SCHOOLS		ELEMENTARY SCHOOLS		SCHOOL BUSES		OTHER
No. of Cameras	No. High Schools	No. of Cameras	No. Middle Schools	No. of Cameras	No. of Elementary Schools	No. of Cameras	No. of Buses	No. of Cameras

6. Please indicate the number of metal detectors in use in your district. (% of schools with metal detectors)

TYPE OF METAL DETECTOR	HIGH SCHOOLS	MIDDLE SCHOOLS	ELEMENTARY SCHOOLS	OTHER
Number of Hand-Held				
Number of Walk-Through				

H. OTHER IMPROVEMENTS TO MAKE THE SCHOOL SAFE

1. Please indicate the **percent** of Safe Schools funding within this category that was spent on each activity below. Please indicate if you would be able to continue providing the activities you identified if you did not receive Safe Schools funds.

OTHER IMPROVEMENTS TO MAKE THE SCHOOL SAFE	PERCENT OF SAFE SCHOOLS FUNDS	CONTINUATION OF ACTIVITY WITHOUT SAFE SCHOOLS FUNDS?	
		YES	NO
After-School Programs at Elementary Schools			
Other (Please Specify):			
Other (Please Specify):			
Other (Please Specify):			
Other (Please Specify):			
Other (Please Specify):			
Other (Please Specify):			
Other (Please Specify):			
Total	100%		

**STATE SAFE SCHOOLS APPROPRIATION
SURVEY OF ACTIVITIES
2000-2001 SCHOOL YEAR**

Superintendent's Signature

Date

Contact's Signature

Date

Thank you for taking the time to fill out this survey.
Please note that the information provided by this survey
is compiled into the statewide *Safe Schools Appropriation Report*.

Please return the completed survey by **April 26, 2002** to:

Office of Safe Schools
Florida Department of Education
325 West Gaines Street, Room 301
Tallahassee, Florida 32399-0400
(850) 410-1667 • Suncom 210-1667 • FAX: (850) 410-1796

APPENDIX C
Longitudinal Analysis of Safe Schools Appropriations
Final Calculations
1996-1997 through 2000-2001

DISTRICT	1996-97	1997-98	%Change from 96-97 to 97-98	1998-99	%Change from 97-98 to 98-99	1999-2000	%Change from 98-99 to 99-00	2000-01*	% Change from 1999-2000 to 2000-2001
Alachua	\$805,981	\$814,647	1%	\$789,873	(-3%)	\$1,099,793	39%	1,237,394	12%
Baker	\$51,024	\$60,290	18%	\$57,266	(-5%)	\$105,196	84%	103,683	(-1%)
Bay	\$468,655	\$487,481	4%	\$470,615	(-3%)	\$662,940	41%	698,742	5%
Bradford	\$67,262	\$72,427	8%	\$80,650	11%	\$139,670	73%	116,370	(-17)
Brevard	\$1,243,922	\$1,286,835	3%	\$1,260,113	(-2%)	\$1,751,446	39%	1,860,166	6%
Broward	\$5,220,121	\$5,323,386	2%	\$5,158,008	(-3%)	\$7,051,724	37%	7,109,294	(-<1%)
Calhoun	\$17,924	\$25,005	40%	\$24,437	(-2%)	\$62,638	156%	65,766	5%
Charlotte	\$246,671	\$243,702	(-1%)	\$245,426	1%	\$361,966	47%	383,059	6%
Citrus	\$200,143	\$202,980	1%	\$194,698	(-4%)	\$294,820	51%	335,561	14%
Clay	\$328,255	\$337,386	3%	\$345,083	2%	\$499,382	45%	545,311	9%
Collier	\$537,478	\$588,994	10%	\$576,414	(-2%)	\$819,573	42%	883,879	8%
Columbia	\$168,708	\$183,291	9%	\$181,138	(-1%)	\$274,516	52%	285,418	4%
DeSoto	\$91,383	\$86,421	(-5%)	\$85,477	(-1%)	\$145,067	70%	149,030	3%
Dixie	\$34,588	\$40,842	18%	\$38,885	(-5%)	\$81,102	109%	79,842	-2%
Duval	\$2,863,249	\$2,871,894	<1%	\$2,830,994	(-1%)	\$3,831,957	35%	4,047,591	6%
Escambia	\$893,692	\$887,195	(-1%)	\$870,410	(-2%)	\$1,191,589	37%	1,241,519	4%
Flagler	\$84,850	\$88,165	4%	\$95,838	9%	\$161,227	68%	162,669	<1%
Franklin	\$19,930	\$18,743	(-6%)	\$26,815	43%	\$66,049	146%	67,567	3%
Gadsden	\$116,891	\$127,412	9%	\$113,547	(-11%)	\$178,778	57%	212,132	19%
Gilchrist	\$22,235	\$29,259	32%	\$30,046	3%	\$70,694	135%	70,107	(-<1)
Glades	\$21,417	\$23,815	11%	\$19,665	(-17%)	\$56,578	188%	58,927	4%
Gulf	\$25,880	\$26,620	3%	\$27,420	3%	\$66,461	142%	71,547	8%
Hamilton	\$18,822	\$29,709	58%	\$35,621	20%	\$77,815	118%	77,663	(-<1)
Hardee	\$79,028	\$78,859	(-<1%)	\$79,018	<1%	\$135,439	71%	131,266	(-3%)
Hendry	\$88,072	\$104,251	18%	\$136,788	31%	\$215,523	58%	210,425	(-2%)
Hernando	\$256,949	\$273,049	6%	\$259,985	(-5%)	\$385,632	48%	411,846	7%
Highlands	\$218,595	\$222,532	2%	\$223,158	<1%	\$327,871	47%	356,302	9%
Hillsborough	\$3,664,173	\$3,764,195	3%	\$3,525,409	(-6%)	\$4,792,662	36%	5,301,781	11%
Holmes	\$34,863	\$27,798	(-20%)	\$36,703	32%	\$79,365	116%	80,558	2%
Indian River	\$276,623	\$273,917	(-1%)	\$287,965	5%	\$420,570	46%	442,479	5%
Jackson	\$104,044	\$102,970	(-1%)	\$90,163	(-12%)	\$148,260	64%	157,120	6%
Jefferson	\$27,915	\$39,845	43%	\$32,483	(-18%)	\$73,361	126%	73,585	<1%
Lafayette	\$7,251	\$8,570	18%	\$8,499	(-1%)	\$41,283	386%	41,863	1%
Lake	\$407,233	\$432,771	6%	\$442,866	2%	\$637,612	44%	722,587	13%
Lee	\$1,034,826	\$1,022,534	(-1%)	\$1,081,469	6%	\$1,517,877	40%	1,610,437	6%
Leon	\$910,345	\$820,745	(-10%)	\$848,415	3%	\$1,177,279	39%	1,223,621	4%
Levy	\$75,978	\$95,114	25%	\$102,952	8%	\$170,788	66%	178,078	4%
Liberty	\$9,833	\$11,709	19%	\$10,546	(-10%)	\$44,120	318%	47,865	8%

DISTRICT	1996-97	1997-98	%Change from 96-97 to 97-98	1998-99	%Change from 97-98 to 98-99	1999-2000	%Change from 98-99 to 99-00	2000-01*	% Change from 1999-2000 to 2000-2001
Madison	\$38,181	\$42,037	10%	\$48,035	14%	\$94,607	97%	111,263	18%
Manatee	\$785,167	\$797,499	2%	\$701,519	(-12%)	\$989,163	41%	1,065,651	9%
Marion	\$698,978	\$656,142	(-6%)	\$654,775	(-1%)	\$923,294	41%	980,591	6%
Martin	\$298,551	\$293,198	(-2%)	\$275,555	(-6%)	\$406,025	47%	430,636	6%
Miami-Dade	\$10,476,767	\$9,582,651	(-9%)	\$9,753,847	2%	\$13,180,019	35%	13,937,044	6%
Monroe	\$287,992	\$275,355	(-4%)	\$277,918	1%	\$405,406	46%	423,378	4%
Nassau	\$131,374	\$134,173	2%	\$137,101	2%	\$213,035	55%	234,202	10%
Okaloosa	\$379,843	\$368,944	(-3%)	\$420,627	14%	\$598,124	42%	644,578	8%
Okeechobee	\$94,534	\$105,875	12%	\$109,848	4%	\$179,361	63%	117,949	(-34%)
Orange	\$2,961,959	\$3,290,746	11%	\$3,303,200	<1%	\$4,536,665	37%	4,955,654	9%
Osceola	\$503,096	\$516,393	3%	\$549,936	6%	\$787,225	43%	891,268	13%
Palm Beach	\$3,630,760	\$3,513,182	(-3%)	\$3,674,936	5%	\$5,024,574	37%	5,707,657	14%
Pasco	\$709,959	\$789,379	11%	\$778,530	(-1%)	\$1,079,327	39%	1,240,940	15%
Pinellas	\$2,617,305	\$2,653,160	1%	\$2,549,585	(-4%)	\$3,458,350	36%	3,869,934	12%
Polk	\$1,555,203	\$1,601,594	3%	\$1,757,599	10%	\$2,441,235	39%	2,550,383	4%
Putnam	\$274,153	\$246,562	(-10%)	\$237,409	(-4%)	\$343,531	45%	353,720	3%
St. Johns	\$247,219	\$264,604	7%	\$268,421	1%	\$400,722	49%	448,499	12%
St. Lucie	\$509,846	\$544,944	7%	\$556,222	2%	\$785,649	41%	801,834	2%
Santa Rosa	\$272,261	\$261,296	(-4%)	\$293,267	12%	\$426,615	45%	440,749	3%
Sarasota	\$794,202	\$772,901	(-3%)	\$747,542	(-3%)	\$1,043,871	40%	1,064,851	2%
Seminole	\$853,661	\$896,234	5%	\$903,893	1%	\$1,259,554	39%	1,372,828	9%
Sumter	\$82,638	\$81,205	(-2%)	\$80,308	(-1%)	\$138,314	72%	159,786	16%
Suwannee	\$63,122	\$59,984	(-5%)	\$89,526	49%	\$150,660	68%	161,119	7%
Taylor	\$56,500	\$64,093	13%	\$62,917	(-2%)	\$114,184	81%	108,797	(-5%)
Union	\$18,188	\$18,527	2%	\$20,615	11%	\$57,516	179%	59,826	4%
Volusia	\$1,095,212	\$1,198,148	9%	\$1,205,221	1%	\$1,659,468	38%	1,885,735	14%
Wakulla	\$47,950	\$58,708	22%	\$45,517	(-22%)	\$90,725	99%	110,139	21%
Walton	\$55,111	\$70,886	29%	\$69,001	(-3%)	\$124,353	80%	144,002	16%
Washington	\$46,175	\$37,074	(-20%)	\$31,887	(-14%)	\$72,430	127%	73,223	1%
FAMU	\$3,717	\$3,261	(-12%)	\$3,383	4%	\$34,529	921%	34,853	<1%
FAU	\$2,647	\$2,748	4%	\$2,753	<1%	\$33,792	1127%	34,420	2%
FSU	\$6,207	\$7,107	14%	\$7,350	3%	\$39,774	441%	41,345	4%
UF	\$6,713	\$6,032	(-10%)	\$6,909	15%	\$39,280	469%	40,096	2%
TOTALS	\$50,350,000	\$50,350,000	0%	\$50,350,000	0%	\$70,350,000	40%	75,350,000	7%

*Florida Department of Education (2000-2001 FEFP FINAL CALCULATION for Safe Schools)

APPENDIX D

Four-Year District Budget Analysis by Safe Schools Category

District	After School Activities for Middle Schools				Alternative School Programs for Adjudicated Youth***	School Safety and Security Activities				Other Improvements to Make a School Safe
	1997-98	1998-99	1999-00	2000-01	2000-01	1997-98	1998-99	1999-00	2000-01	2000-01
Alachua	0%	0%	0%	0%	0%	100%	100%	87%	36%	64%
Baker	41%	46%	14%	23%	39%	100%	0%	39%	39%	0%
Bay	N/R*	N/R	0%	0%	18%	N/R	N/R	86%	81%	2%
Bradford	16%	0%	0%	0%	0%	68%	100%	88%	87%	13%
Brevard**	0%	0%	0%	0%	53%	52%	39%	67%	34%	13%
Broward	11%	9%	9%	10%	5%	57%	55%	56%	68%	17%
Calhoun	0%	0%	0%	0%	0%	100%	100%	100%	100%	0%
Charlotte	5%	0%	0%	0%	0%	88%	100%	100%	100%	0%
Citrus	0%	N/R	0%	0%	0%	100%	N/R	100%	100%	0%
Clay	0%	0%	0%	0%	21%	100%	100%	83%	79%	0%
Collier	34%	16%	7%	0%	0%	27%	51%	51%	44%	1%
Columbia	6%	0%	0%	0%	0%	94%	100%	100%	100%	0%
Miami-Dade	6%	6%	2%	4%	0%	94%	94%	98%	42%	53%
DeSoto**	64%	0%	0%	0%	0%	4%	100%	79%	100%	0%
Dixie	0%	0%	0%	0%	0%	0%	0%	0%	0%	0%
Duval**	49%	42%	39%	29%	0%	45%	44%	61%	71%	0%
Escambia	0%	0%	0%	0%	0%	80%	70%	71%	76%	24%
Flagler	N/R	0%	0%	0%	0%	N/R	100%	100%	100%	0%
Franklin	0%	0%	0%	0%	0%	100%	100%	100%	53%	47%
Gadsden	0%	0%	0%	0%	11%	0%	1%	61%	61%	28%
Gilchrist	0%	0%	0%	0%	0%	100%	50%	50%	100%	0%
Glades	6%	63%	2%	6%	26%	3%	37%	19%	68%	0%
Gulf	0%	0%	0%	0%	0%	100%	100%	100%	0%	0%
Hamilton	0%	0%	0%	0%	0%	100%	100%	100%	100%	0%
Hardee	0%	0%	0%	0%	21%	87%	87%	82%	56%	23%
Hendry	55%	0%	0%	0%	100%	40%	21%	0%	0%	0%
Hernando	0%	0%	0%	0%	0%	59%	29%	52%	39%	61%
Highlands	0%	0%	0%	0%	0%	20%	20%	100%	100%	0%
Hillsborough	46%	30%	31%	28%	4%	48%	68%	52%	63%	5%
Holmes	0%	0%	0%	0%	19%	0%	0%	0%	19%	63%
Indian River	N/R	0%	0%	0%	0%	N/R	68%	100%	100%	0%
Jackson**	0%	0%	0%	0%	0%	99%	99%	84%	100%	0%
Jefferson	N/R	0%	0%	0%	34%	N/R	90%	57%	66%	0%
Lafayette	0%	0%	0%	0%	0%	100%	100%	100%	100%	0%
Lake**	0%	0%	0%	0%	3%	79%	100%	100%	94%	3%

District	After School Programs				Alternative School Programs for Adjudicated Youth***	School Safety and Security Activities				Other Improvements to Make a School Safe
	1997-98	1998-99	1999-00	2000-01		2000-01	1997-98	1998-99	1999-00	
Lee	15%	10%	25%	26%	23%	60%	74%	57%	47%	5%
Leon	N/R	36%	10%	6%	0%	N/R	64%	90%	94%	0%
Levy	0%	0%	0%	0%	0%	40%	43%	72%	50%	50%
Liberty	0%	0%	0%	0%	3%	100%	100%	96%	76%	20%
Madison	0%	0%	0%	0%	0%	100%	100%	100%	100%	0%
Manatee	15%	20%	0%	4%	6%	75%	70%	100%	90%	0%
Marion	35%	40%	51%	0%	0%	33%	32%	28%	40%	60%
Martin	22%	4%	14%	0%	0%	78%	94%	86%	100%	0%
Monroe	30%	31%	19%	0%	30%	59%	58%	74%	60%	11%
Nassau	0%	0%	0%	0%	0%	100%	100%	100%	100%	0%
Okaloosa	18%	10%	6%	0%	0%	74%	86%	86%	66%	34%
Okeechobee	0%	0%	0%	0%	0%	89%	100%	100%	100%	0%
Orange	2%	0%	0%	0%	17%	80%	90%	73%	42%	0%
Osceola	0%	0%	0%	0%	31%	100%	100%	78%	69%	0%
Palm Beach	42%	37%	22%	22%	7%	44%	47%	54%	34%	37%
Pasco	32%	5%	1%	4%	0%	48%	84%	92%	60%	36%
Pinellas	24%	6%	2%	0%	0%	72%	91%	96%	100%	0%
Polk	0%	0%	0%	0%	6%	84%	84%	88%	70%	24%
Putnam	49%	19%	32%	22%	31%	29%	44%	42%	11%	28%
St. Johns	0%	0%	0%	0%	0%	62%	37%	25%	100%	0%
St. Lucie	10%	22%	0%	0%	0%	90%	78%	100%	100%	0%
Santa Rosa	0%	0%	0%	0%	0%	40%	93%	73%	100%	0%
Sarasota	0%	0%	0%	0%	0%	100%	100%	100%	0%	0%
Seminole	7%	0%	0%	0%	0%	60%	76%	100%	100%	0%
Sumter	12%	10%	7%	24%	0%	88%	90%	10%	44%	32%
Suwannee	12%	23%	10%	13%	0%	88%	77%	90%	87%	0%
Taylor	39%	40%	67%	52%	25%	18%	25%	11%	7%	16%
Union	0%	0%	0%	0%	0%	100%	100%	100%	100%	0%
Volusia	33%	25%	25%	23%	0%	36%	53%	47%	77%	0%
Wakulla	5%	2%	0%	0%	0%	28%	66%	96%	100%	0%
Walton	0%	0%	0%	0%	0%	63%	63%	74%	100%	0%
Washington	0%	0%	0%	0%	0%	0%	100%	100%	0%	100%
FAMU School	N/R	N/R	0%	0%	0%	N/R	N/R	100%	100%	0%
FAU School	0%	0%	1%	5%	0%	100%	100%	99%	92%	3%
FSU School	0%	0%	0%	0%	0%	100%	100%	100%	100%	0%
UF School	46%	48%	0%	0%	0%	54%	52%	100%	100%	0%

*N/R (No Response) – Figures not provided by the district

** District did not expend their total 2000-2001 allocation; thus the percentage will not total 100%

***Previous years included all Alternative Placement Programs, not just those for adjudicated youth.

APPENDIX E

District Safe Schools Contact Person List

District Name	Contact Person	SC	Telephone	Fax	E-mail
Alachua	Dr. Donna Omer	625-7605	352/955-7605	352/955-7619	omerd@sbac.edu
Baker	Mike McCaskil		904/259-1724	904/259-1728	
Bay	Jess Snyder	777-7152	850/873-7152	850/747-5280	snydejh@mail.bay.k12.fl.us
Bradford	Eugenia Whitehead	878-6810	904/966-6810	904/966-6818	whitehea_e@firm.edu
Brevard	Betty A. Dunn	323-1270	321/631-1911 x. 270	321/633-3454	dunnb@brevard.k12.fl.us
Broward	Frank Vodolo		954/768-8156	954/768-8926	fvodolo@browardschools.com
Calhoun	Gary Cox		850/674-8734	850/674-4743	cox_g2@firm.edu
Charlotte	Steve Cummings	758-0808	941/255-0808 x.3022	941/255-7583	Steven_Cummings@ccps.k12.fl.us
Citrus	Bonnie Hardiman or Edward Murphy	647-1011	352/726-1931	352/726-0996	
Clay	Joyce Alford	835-6511	904/284-6511	904/529-2170	jalford@mail.clay.k12.fl.us
Collier	Stephen M. Fain	752-1011	941/643-2700	941/436-6599	hunterjr@collier.k12.fl.us
Columbia	Joe R. Kirkland	887-8015	386/755-8015	386/755-8008	kirklandj@firm.edu
DeSoto	Robert A. Hrstka	721-7500	863/993-1333	863/993-9181	robert.hrstka@desoto.k12.fl.us
Dixie	Ken Baumer or Mary Werner		352/542-1078	352/542-1069	baumer_k@dixie.k12.fl.us or werner_ma@dixie.k12.fl.us
Duval	Kris Larsen		904/858-6089	904/858-6088	larsenk@educationcentral.org
Escambia	Charles G Thomas, Sr		850/595-6085	850/595-1042	C.Thomas@Escambia.kb2.Fl.Us
Flagler	Mike Judd	370-7526	386/437-7526	386/437-7577	juddm@flagler.k12.fl.us
Franklin	Nan Collins	771-4770	850/653-8831x107	850/653-8984	collins_nl@popmail.firm.edu
FAMU LAB	Marvin Byers		850/599-3325	850/561-2609	
FAU LAB	Dr. Steven Montes		561/297-0140	561/297-3939	smontes@fau.edu
FSU LAB	Glenn Thomas		850/245-3700	850/245-3737	gthomas@mail.fsu.edu
Gadsden	Phil Palmer		850/627-9651	850/67-2760	Palmer_03@firm.edu
Gilchrist	Dr. James Surrency	640-3200	352/463-3200	352/463-3276	Surrency_ji@firm.edu
Glades	Jean Prowant		863/946-0811	863/946-1532	
Gulf	Deborah S. Crosby	771-4906	850/229-6940	850/227-1999	Crosby_d@popmail.firm.edu
Hamilton	Sean Alderman	N/A	386/792-6510	386/792-3681	alderman_s01@firm.edu
Hardee	Greg Dick	721-7440	863/773-9058	863/773-0069	gdick@hardee.k12.fl.us
Hendry	R. Scott Cooper	744-4555x204	863/674-4555x204	863/674-4581	cooperr@hendry.k12.fl.us
Hernando	James S. Knight		352/797-7008	352/797-7108	
Highlands	Michael Averyt	742-5626	863/471-5626	863/471-5568	averytm@highlands.k12.fl.us
Hillsborough	Randolph Poindexter	547-4070	813/272-4070	813/272-4074	Randy.Poindexter@sdhc.k12.fl.us
Holmes	Jim Hicks	771-4054	850/547-9341	850/547-0381	HUDSON_S2@firm.edu
Indian River	Ruth Shaw	257-1011	772/564-3089	772/564-3077	ruth.shaw@indian-river.k12.fl.us
Jackson	Richard Wheatley or Kenny Daffin	789-1200	850/482-1200	850/482-1299	wheatley_r@firm.edu or daffin_k01@firm.edu
Jefferson	Albert Thomas, Jr.	297-0100	850/342-0100	850/342-0108	thomas_al@firm.edu
Lafayette	Derek Hembree		386/294-1701	386/294-4197	dhembree@fc.lafayette.k12.fl.us
Lake	Lynn Jones	660-1259x 205	352/ 343-3531 x 205	352/ 343-0198	jonesL@lake.k12.fl.us
Lee	Dr. Charles F. Bell	759-5342	239/337-8342	239/337-8299	Dr.CharlesB@lee.k12.fl.us
Leon	Ron Steverson		850/487-7101	850/414-5156	Steversonr@mail.leon.k12.fl.us
Levy	Jeff Davis	645-5231	352/486-5231	352/486-5237	davisj@levy.k12.fl.us
Liberty	Sheila D. Shelton		850/643-2275	850/643-2533	shelton_sl@popmail.firm.edu
Madison	Lucile B. Day	296-5022	850/973-5022	850/973-5027	dayl@madison.k12.fl.us
Manatee	Dr. Janice L. Bevan	516-2000x2080	941/708-8770x2080	941/708-8682	bevanj@fc.manatee.k12.fl.us
Marion	James M. Yancey		352/671-7705	352/671-7581	
Martin	Darla Miloszewski	269-1200x30236	772/219-1200x30236	772/219-1229	miloszd@martin.k12.fl.us
Miami-Dade	Chief Pete Cuccaro		305/757-7708	305/751-7626	
Monroe	Dr. Margaret A. Smith	305/464-1400x332	305/293-1400x392	305/293-1408	smithp@monroe.k12.fl.us
Nassau	Andreu Powell	848-5880	904/321-5810	904/321-5807	Andreu.Powell@Nassau.k12.fl.us

District Name	Contact Person	SC	Telephone	Fax	E-mail
Okaloosa	Steve Horton		850/833-3160	850/833-3161	hortons@mail.okaloosa.k12.fl.us
Okeechobee	James E. Kirk	971-5000	863/462-5000	863/462-5022	kirkj@ocsb.okee.k12.fl.us
Orange	Marjorie LaBarge		407/317-3327	407/317-3344	labargm@ocps.k12.fl.us
Osceola	Annalee Meadows	340-4921	407/870-4901	407/870-4994	meadowsa@osceola.k12.fl.us
PK Yonge	Dr. Wes Corbett	622-1554	352/392-1554	352/392-9559	wcorbett@pky.ufl.edu
Palm Beach	Martha J. Jones	262-8300	561/434-8300	561/434-8186	JONESM@FLCJN.NET
Pasco	Albert J. Bashaw	597-2356	813/794-2356	813/794-2120	abashaw@pasco.k12.fl.us
Pinellas	Alison Weber	565-6178	727/588-6151	727/588-6182	weberal@pinellas.k12.fl.us
Polk	Greg Bondurant		863/499-2728	863/284-4292	Gbondurant@pcsb.k12.fl.us
Putnam	Phyllis Criswell	832-0538	386/329-0538	386/329-0607	pcriswell@putnamschools.org/
St. Johns	Donna Wethington		904/826-2177	904/827-9516	wethinD@mail.stjohns.k12.fl.us
St. Lucie	David Morris	231-5000	772/340-7173	772/340-4799	morrisd@stlucie.k12.fl.us
Santa Rosa	Nancy Padgett	689-5060	850/983-5060	850/983-5067	padgetn@mail.santarosa.k12.fl.us
Sarasota	Sherri T. Reynolds	529-4309	941/927-9000x34309	941/361-6157	Sherri_Reynolds@sarasota.k12.fl.us
Seminole	Jim Dawson		407/320-0167	407/320-0585	Jim_Dawson@scps.k12.fl.us
Sumter	Hannah M. Foster	621-7030	352/793-2315x215	352/793-4180	fosterh@sumter.k12.fl.us
Suwannee	James Cooper		386/364-2624	386/364-2635	jcooper@suwannee.k12.fl.us
Taylor	Paul Dyal		850/838-2516	850/838-2559	paul.dyal@taylor.k12.fl.us
Union	Deborah S. Dukes	823-2045x231	386/496-2045x231	386/496-4818	dukesd@union.k12.fl.us
Volusia	Mary C. Bruno		386/255-6475x2202	386/947-5872	mbruno@volusia.k12.fl.us
Wakulla	Judy Myhre	277-3143	850/926-7131	850/926-7994	myhrej@wakulla.k12.fl.us
Walton	Cynthia Jeselnik		850/892-8323	850/892-8312	jeselnic@walton.k12.fl.us
Washington	Mike Welch	769-6222	850/638-6222	850/638-6226	welch_m@firm.edu



**CHARLIE
CRIST
COMMISSIONER**

an affirmative action/
equal opportunity employer
