

**DOE/FLAG Workshop  
for Teachers New to Gifted Education  
July 26, 2004**

**Pre-Registration**

To ensure participants receive copies of all workshop materials and resources, pre-registration is required by **July 9, 2004**.

**Registration Form**

Name \_\_\_\_\_

School District \_\_\_\_\_

Address \_\_\_\_\_

City/State/Zip \_\_\_\_\_

Grade (circle) Elementary Middle Senior

Phone \_\_\_\_\_

E-mail \_\_\_\_\_

**Fax registration no later than  
July 9, 2004, to:**

Florida Department of Education  
Program Development & Services  
Fax #: (850) 245-0955

Any questions regarding registration  
for the workshop, please contact:

The Florida Department of Education  
Donnajo Smith, Program Specialist  
(850) 245-0478  
e-mail: [donnajo.smith@fldoe.org](mailto:donnajo.smith@fldoe.org)

**Meals**

A continental breakfast (Danish with coffee) will be provided at no cost to participants.

**Directions to the University of South  
Florida (Main Campus)**

**From the north:**

Take I-275 south to the Fowler Avenue exit (#51), go east or take I-75 south to the Fowler Avenue exit (#265) and go west to the main entrance to the university.

**From the east:**

Take I-4 to I-75 and go north. Exit at Fowler Avenue and go west to the university's main entrance.

**From the south or from Tampa  
International Airport:**

Take I-275 north to the Fowler Avenue exit (#51) and go east or take I-75 north to the Fowler Avenue exit and go west to the university's main entrance.

**From the west:**

Take either the Courtney Campbell Causeway or the Howard Franklin Bridge, go east to I-275 and follow above directions to university.

**Directions to La Quinta Inn**

From the university main entrance, travel west on East Fowler and turn south to La Quinta.

**From the Hotel to University**

Travel east on East Fowler Avenue for .7 miles to the main gate to the university.

**Parking**

Parking is available in the Sun Dome parking lot adjacent to the College of Education. There is a visitor parking permit available for \$3.00. Signs will direct you to the College of Education.

**Florida  
Department of Education  
and  
Florida  
Association for the Gifted**

*present*

**A Workshop for  
Teachers  
New to Gifted Education**



**July 26, 2004**

**Who Should Attend**

- Beginning teachers of gifted students
- Teachers of the gifted desiring opportunities for professional renewal

## Learn About

- Instructional strategies for working with gifted students
- Managing classrooms in various service delivery models
- Opportunities for networking and mentoring

## Presentations

LEARN from experienced teachers of the gifted, district gifted program coordinators, and the current Florida Association of the Gifted Teacher of the Year

NETWORK with other teachers new to gifted education

SHARE questions with district and state administrators

RECEIVE lesson plans, units, and classroom resources at the Curriculum Marketplace

VISIT vendors featuring gifted resource materials

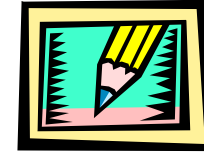


## Agenda

|               |   |
|---------------|---|
| 8:00 - 8:30   | Registration  |
| 8:30 - 9:30   | DOE Welcome<br>FLAG Welcome<br>Thoughts for Teachers of the Gifted  |
| 9:40 - 10:45  | Instructional Strategies<br>Breakout Sessions: <ul style="list-style-type: none"><li>• Curriculum Compacting</li><li>• Differentiated Curriculum</li><li>• Nature &amp; Needs of Gifted Students</li><li>• Identification and Diversification for Gifted Learners</li></ul> |
| 10:55 - 11:30 | Full Group Session <ul style="list-style-type: none"><li>• Teacher of the Year Keynote</li></ul>  |
| 11:30 - 1:00  | Lunch (on your own)   |
| 1:00 - 1:45   | Welcome from USF<br>New Teacher Keynote   |
| 1:55 - 3:00   | Service Delivery<br>Breakout Sessions: <ul style="list-style-type: none"><li>• Pull-Out Model</li><li>• Secondary School</li><li>• Pull-Out Academic Model</li><li>• Pull-Out Enrichment Model</li><li>• Full-Time Gifted</li></ul>   |
| 3:00 - 4:00   | DOE Initiatives<br>Meet FLAG Officers<br>Q & A Open Forum   |
| 11:30 - 4:30  | Curriculum Marketplace  |

## Location

College of Education  
University of South Florida  
4202 East Fowler Avenue  
Tampa, Florida  
(813) 974-2011



**Hotel reservations may be made by contacting:**

La Quinta Inn  
3701 East Fowler Avenue  
Tampa, Florida 33612  
(813) 910-7500

(Mention you are with the DOE/FLAG group)

## Room Reservation Deadline

**July 10th, 2004**

*(A block of rooms has been reserved for the night of July 25, 2004, at the rate of \$69 per night, two double beds or king bed.)*

## Special Needs

Accommodations for participants with special needs are available. Please contact:

**Dr. Elizabeth Shaunessy**  
(813) 974-7007

